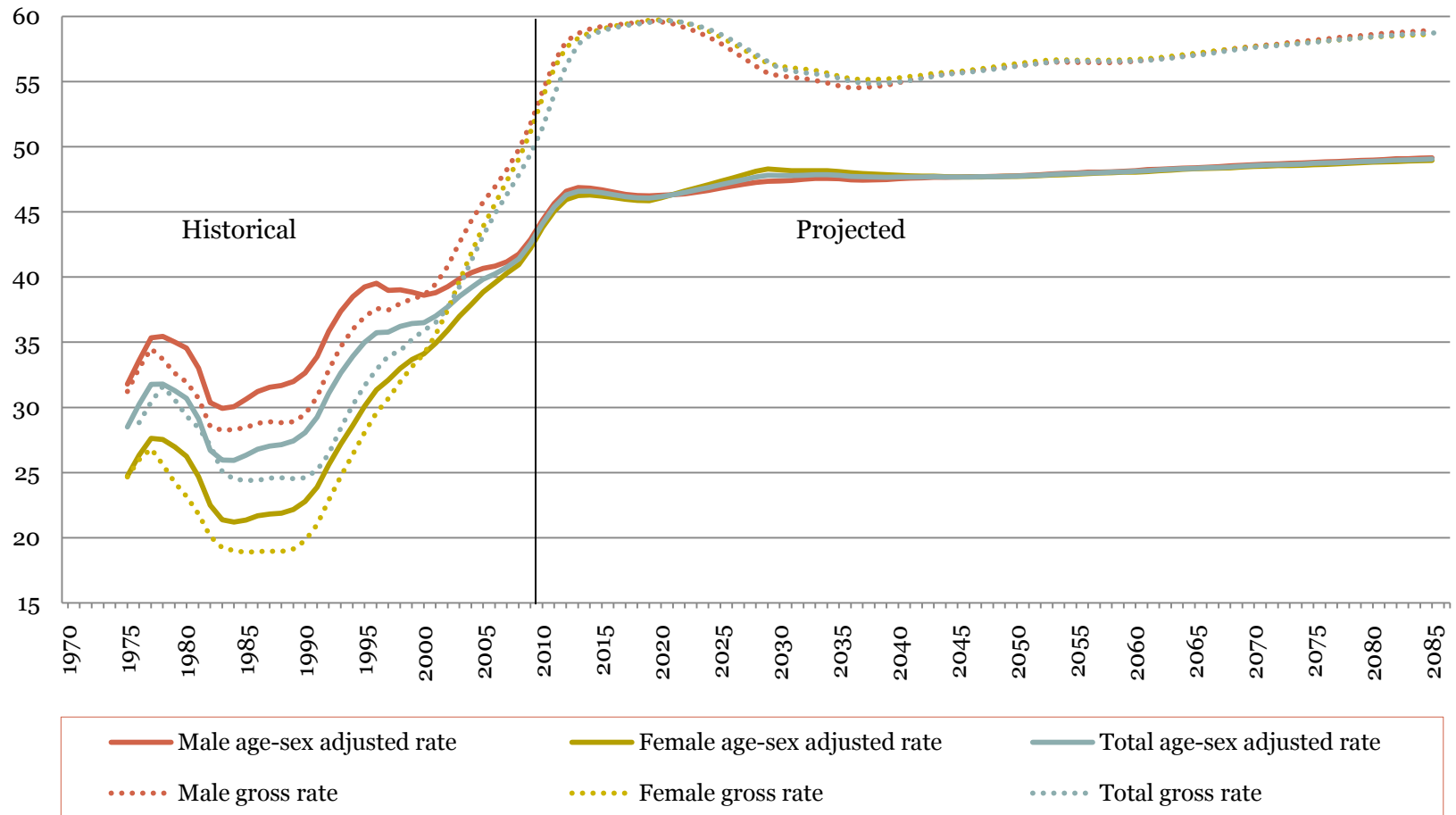


2011 Technical Panel 2010TR Disability Projections

SSA/OCACT
JANUARY 28, 2011

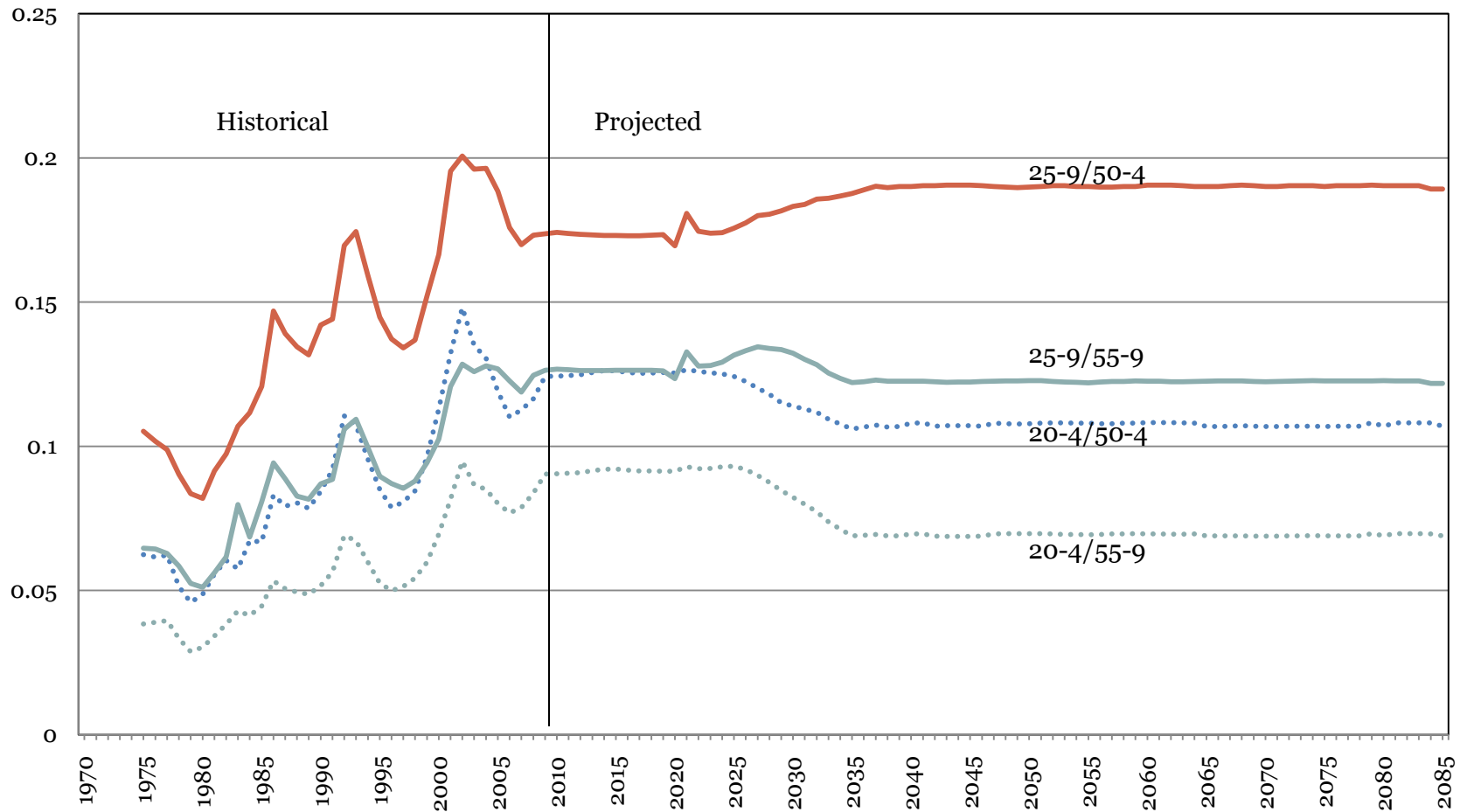
Disabled Worker Prevalence Rises Slowly in the Future

**Disabled Worker Prevalence Rates (per 1,000 Insured Population)
Comparison of Gross and Age-Sex-Adjusted to the Year 2000 Insured
Population**



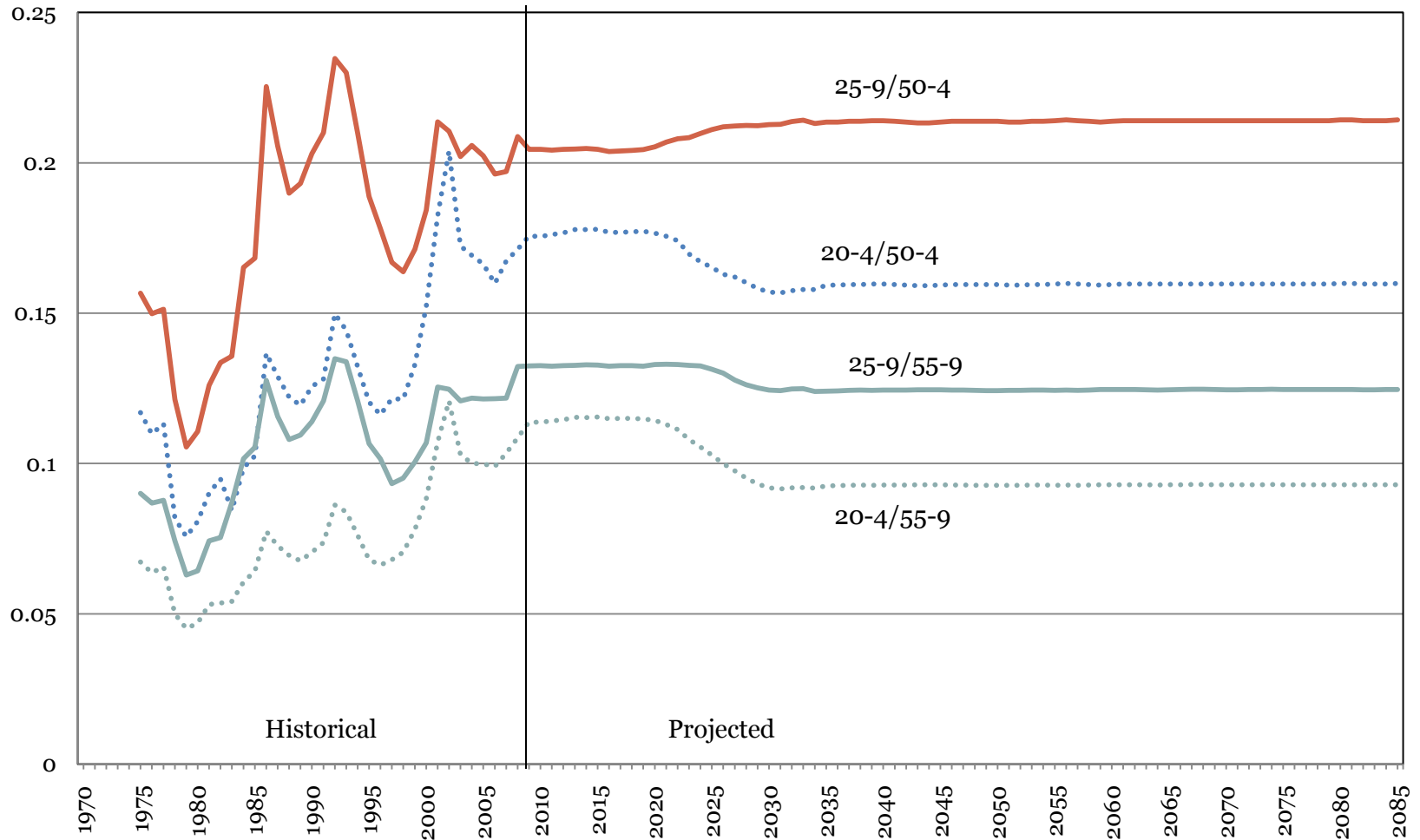
...and (2) Shift Toward Younger Incidence Ceases

Female Disabled Worker Award Incidence Rates: Ratio of Young to Old



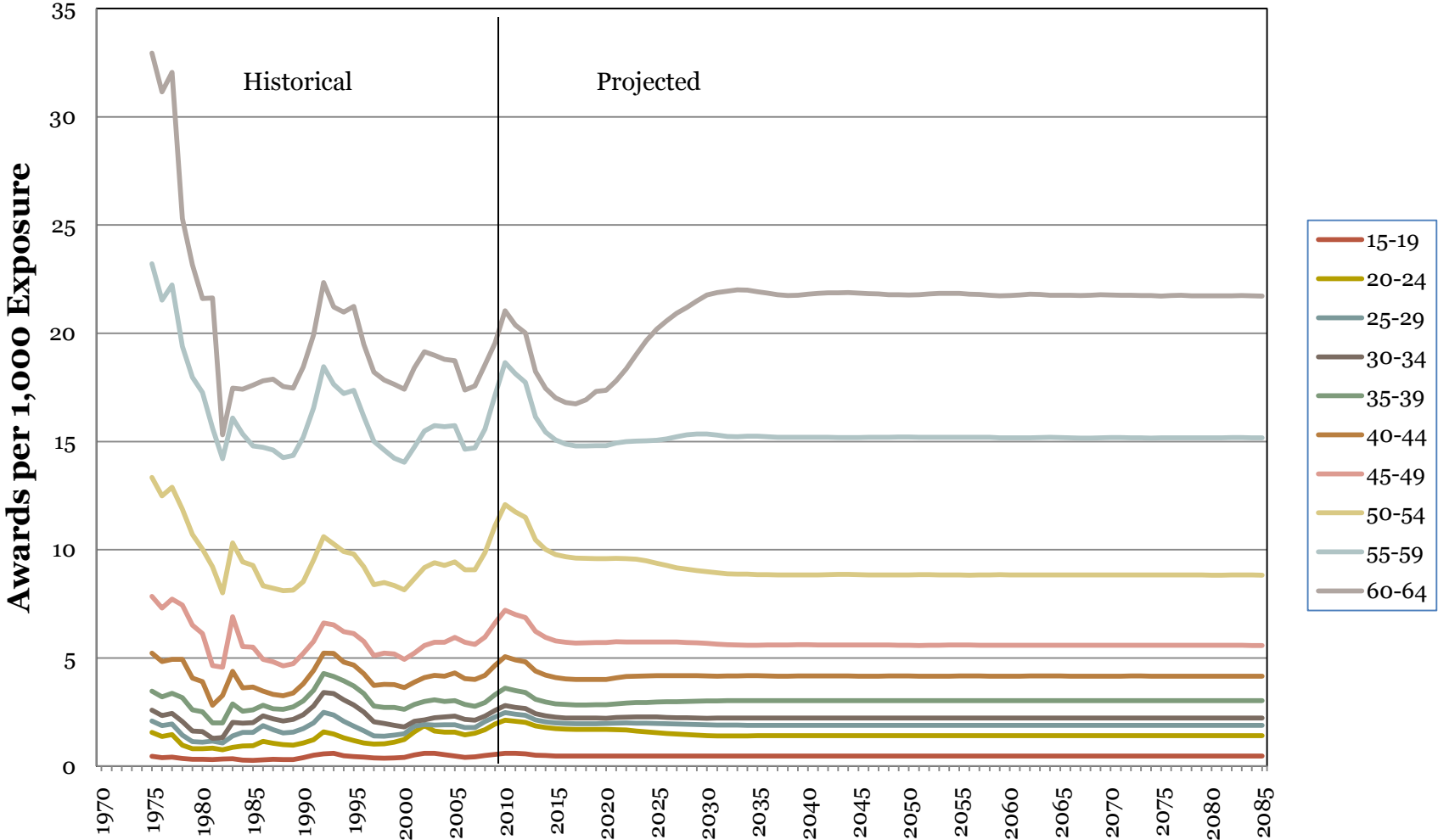
The Situation is Similar for Males

Male Disabled Worker Award Incidence Rates: Ratio of Young to Old



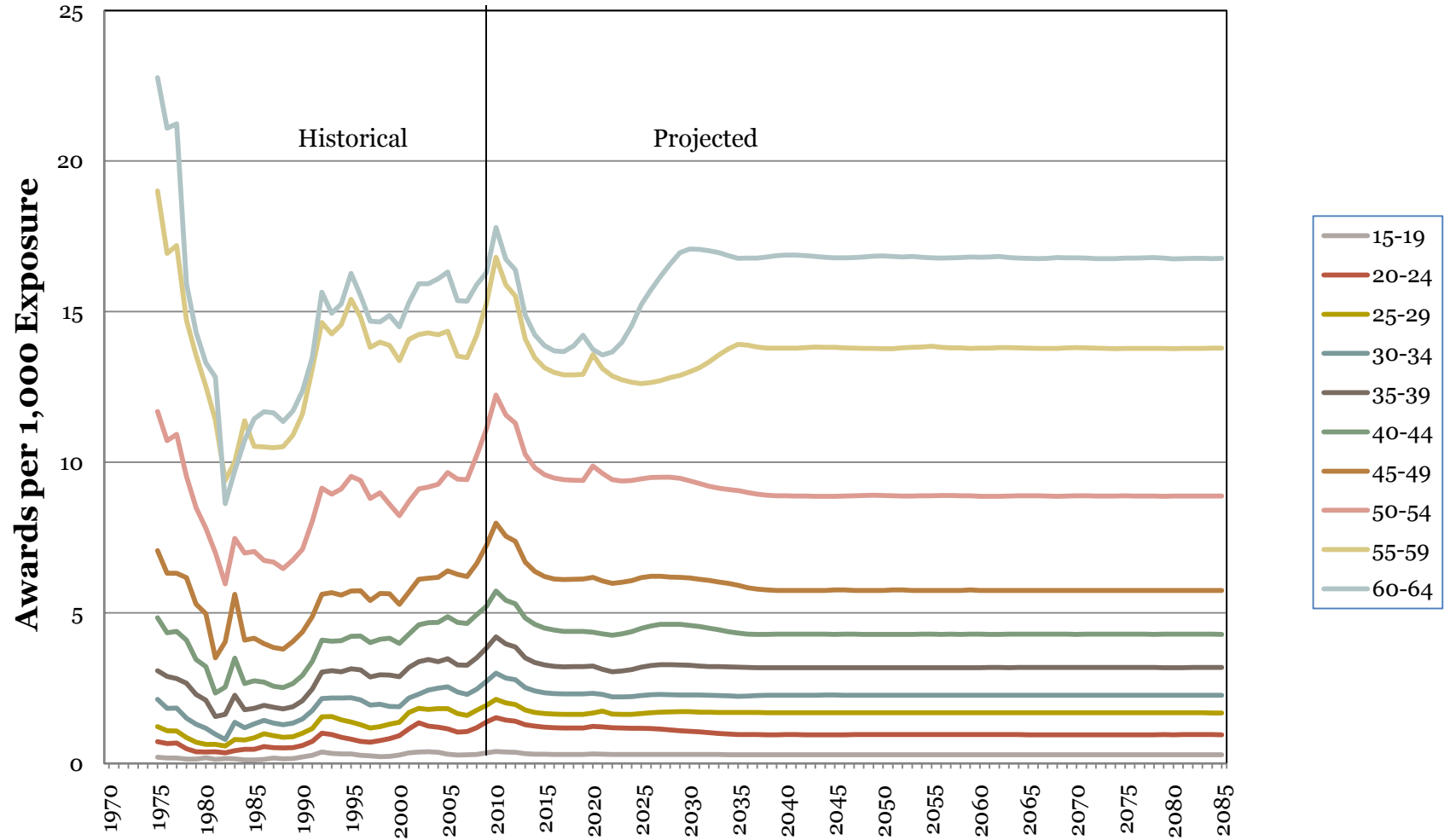
Long Range Model Tracks Retirement Age and Ultimate Rate Assumptions

Male Disabled Worker Award Incidence Rate



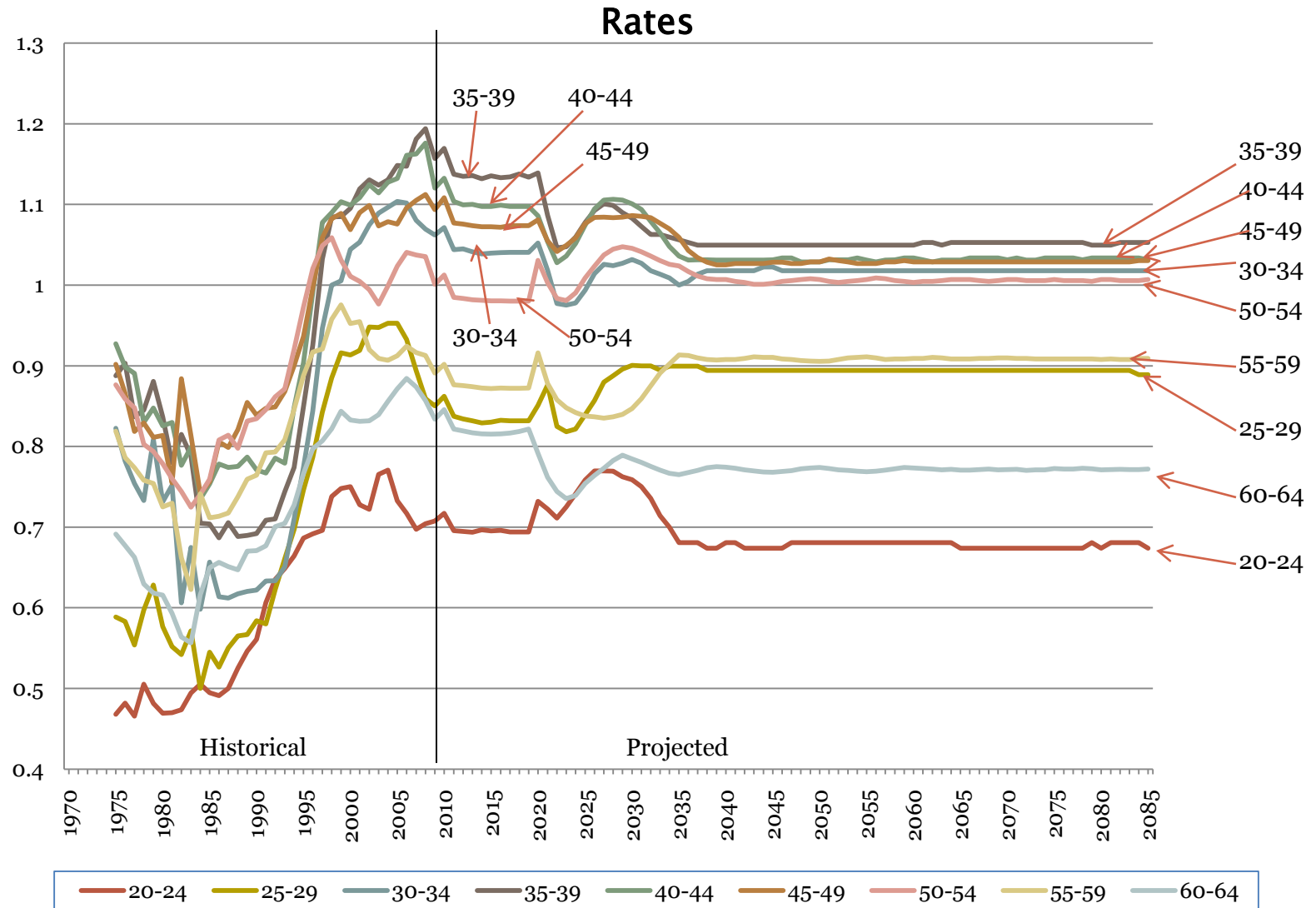
Long Range Ultimate Incidence Rates Assumed to Stabilize

Female Disabled Worker Award Incidence Rate



Ratio of Female to Male Incidence Rates Also Stabilizes

Ratio of Female to Male Disabled Worker Award Incidence Rates

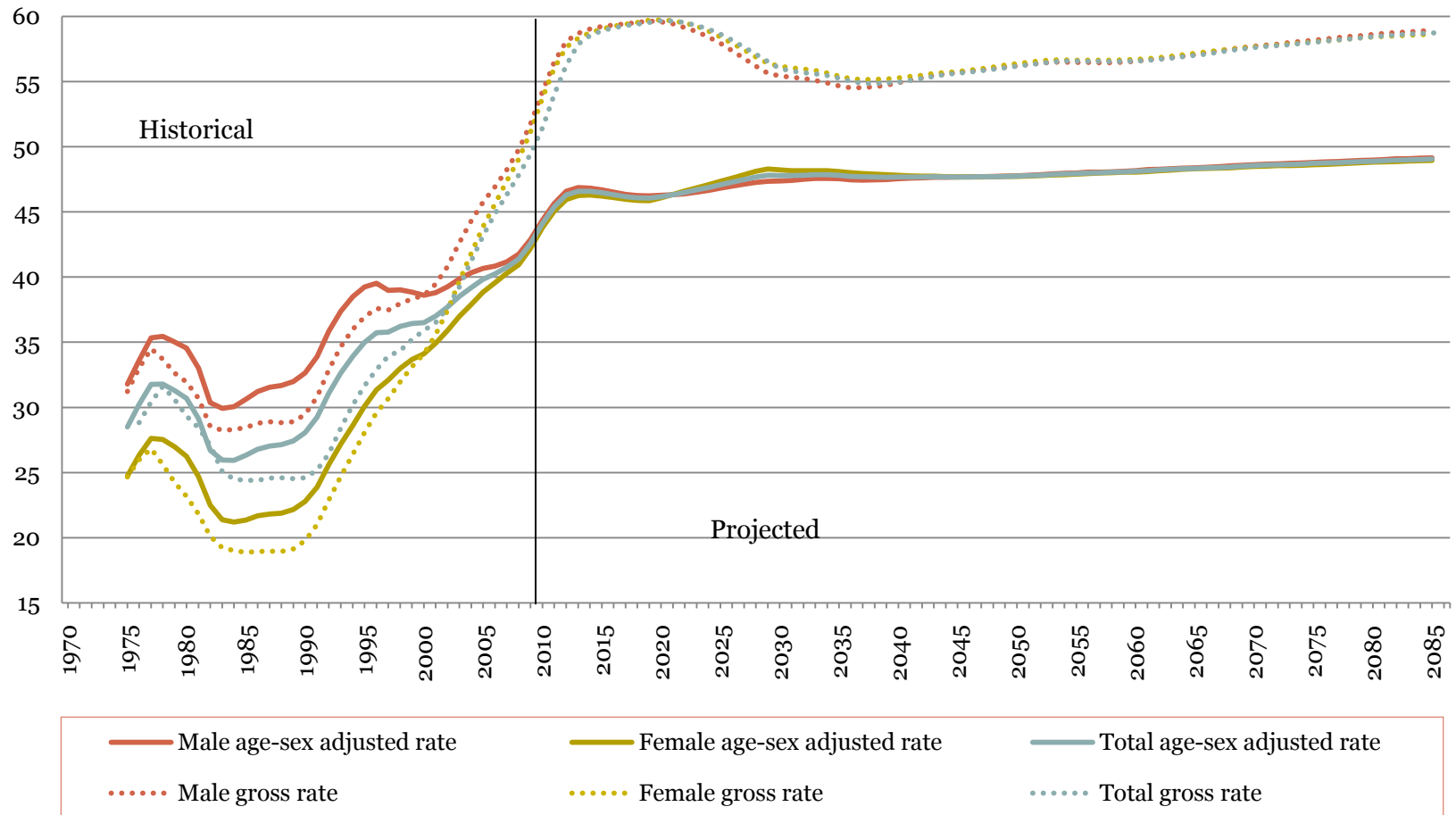


2011 Technical Panel 2010TR Disability Projections

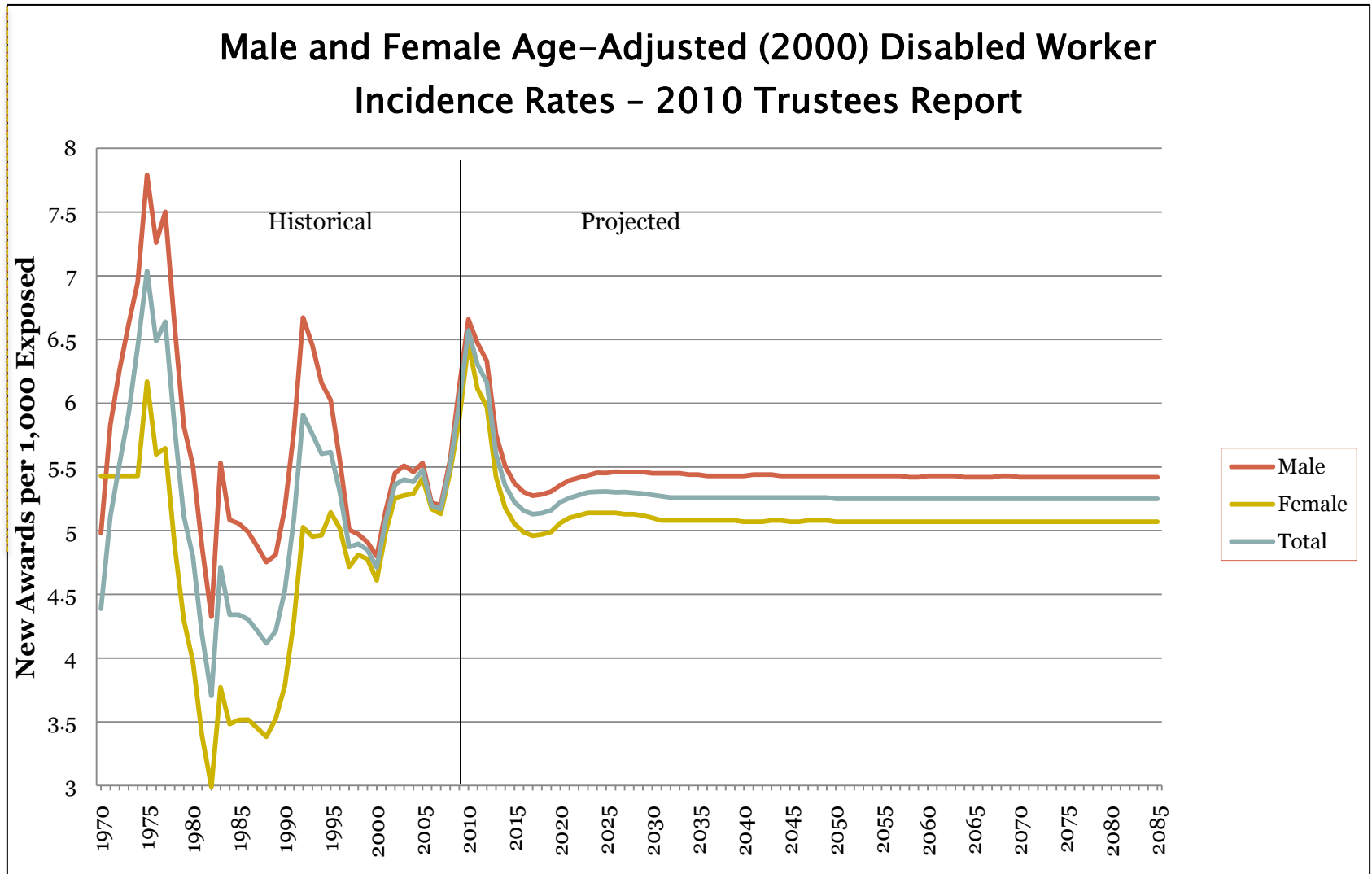
SSA/OCACT
OCTOBER 1, 2010

Disabled Worker Prevalence Rises Slowly in the Future

**DI Disabled Worker Prevalence Rates (per 1,000 Insured Population)
Comparison of Gross and Age-Sex-Adjusted to the Year 2000 Insured
Population**

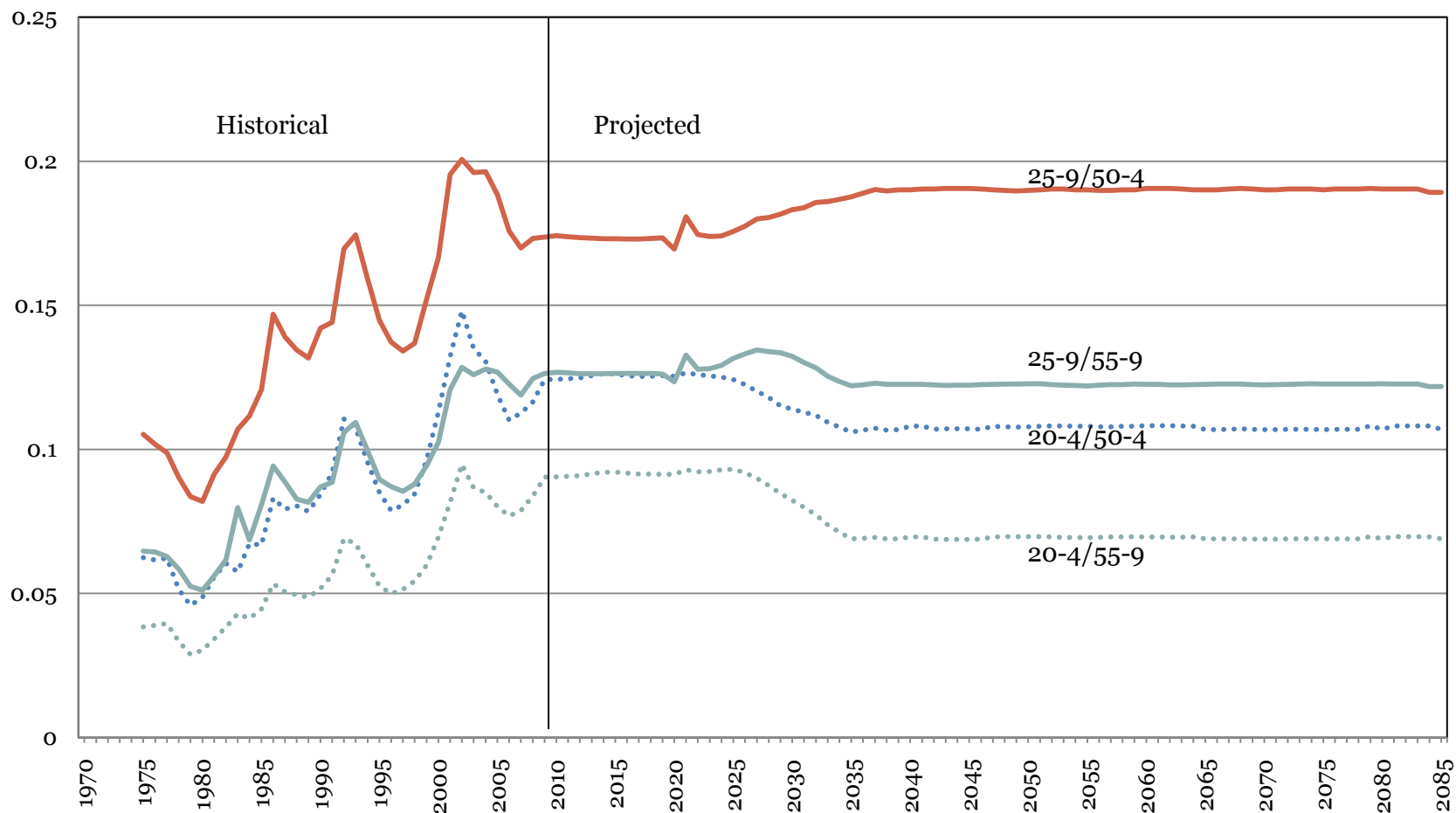


Because (1) Overall Incidence Rates Stabilize Below Recent Peaks



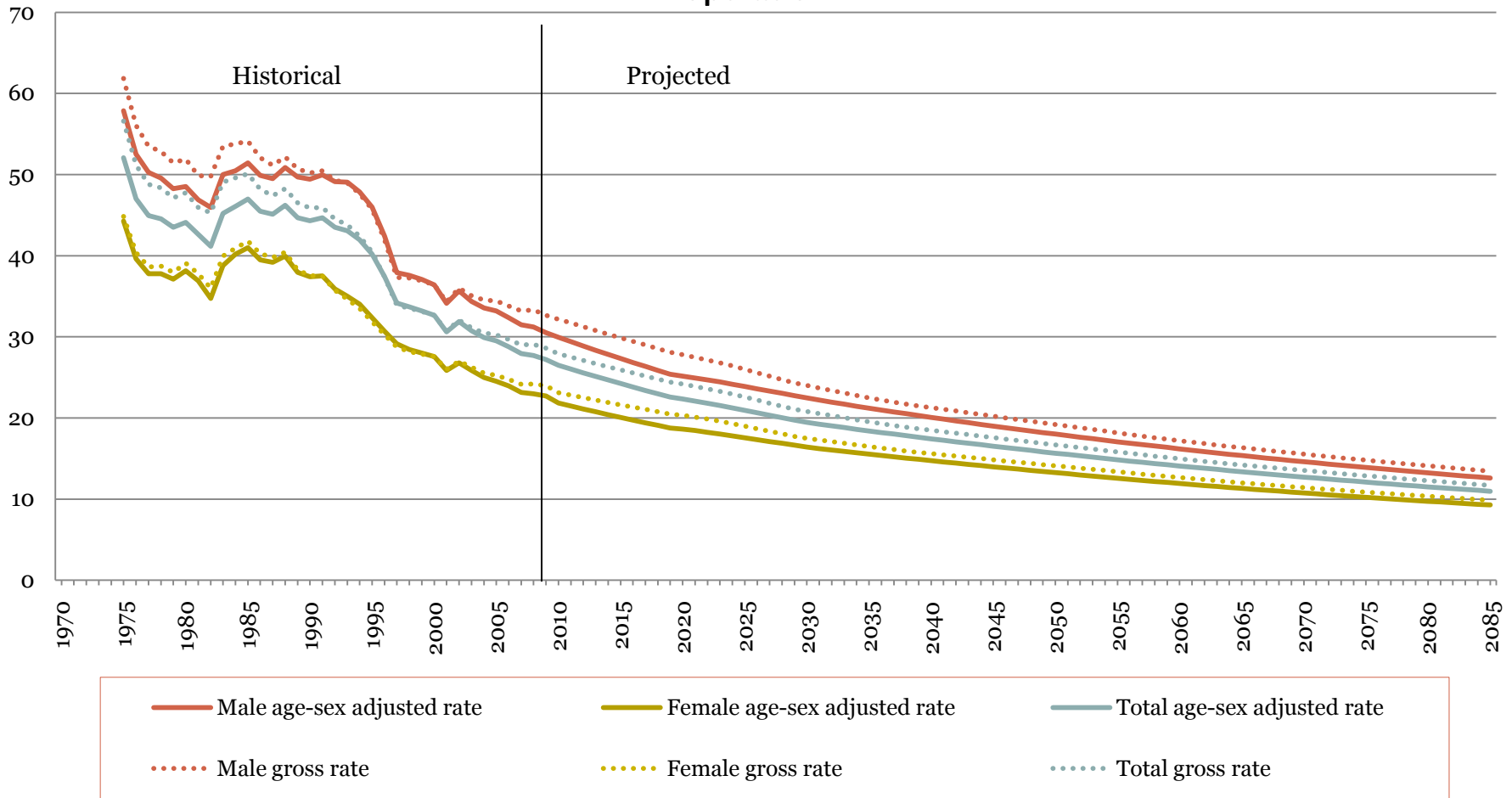
...and (2) Shift Toward Younger Incidence Ceases

Female Disabled Worker Award Incidence Rates: Ratio of Young to Old



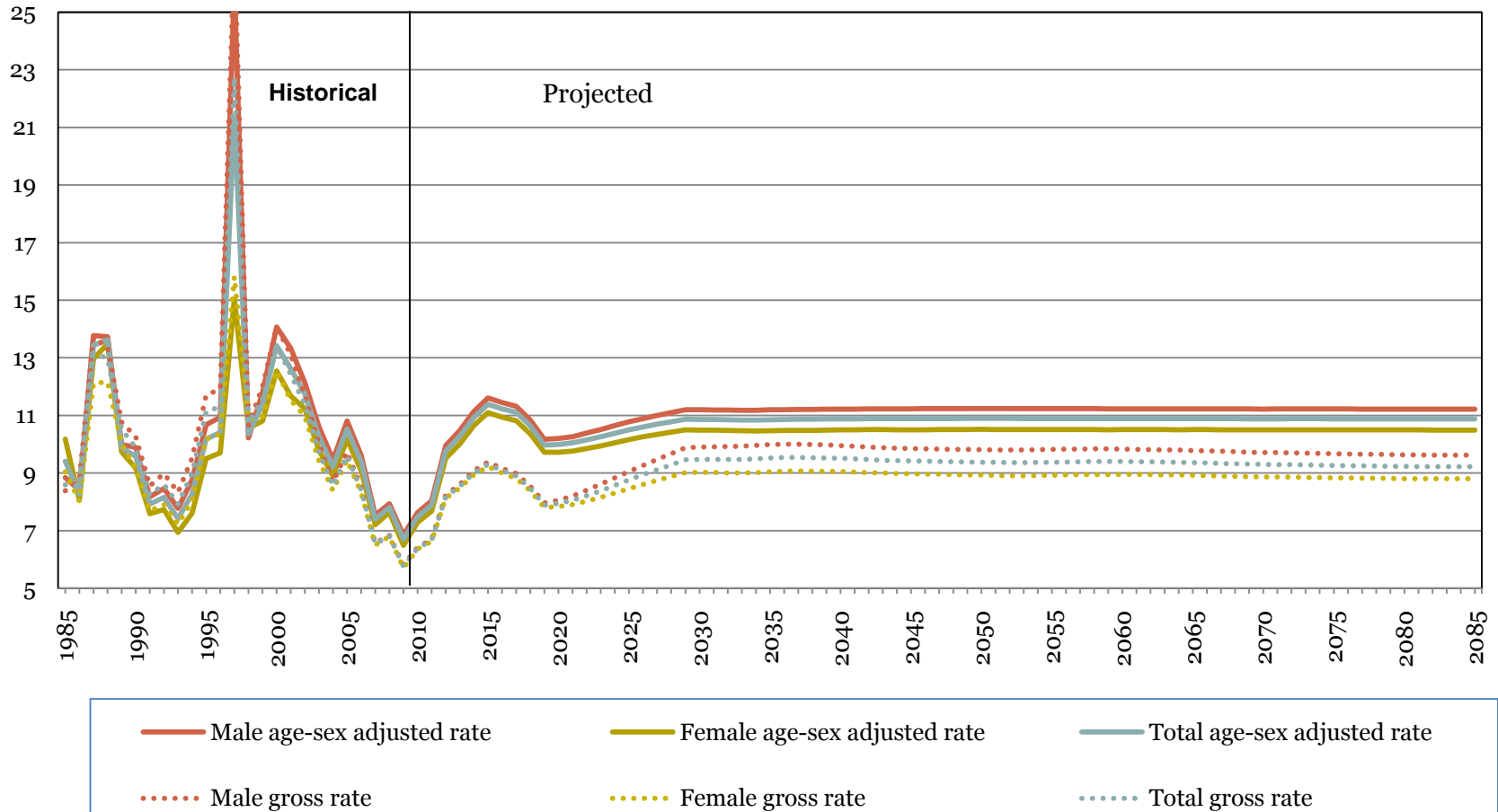
Death Termination Rates Follow Gen Pop Trends

DI Disabled Worker Death Rates (per 1,000 Beneficiaries)
Comparison of Gross and Age-Sex-Adjusted to the Year 2000 Disabled Worker Population



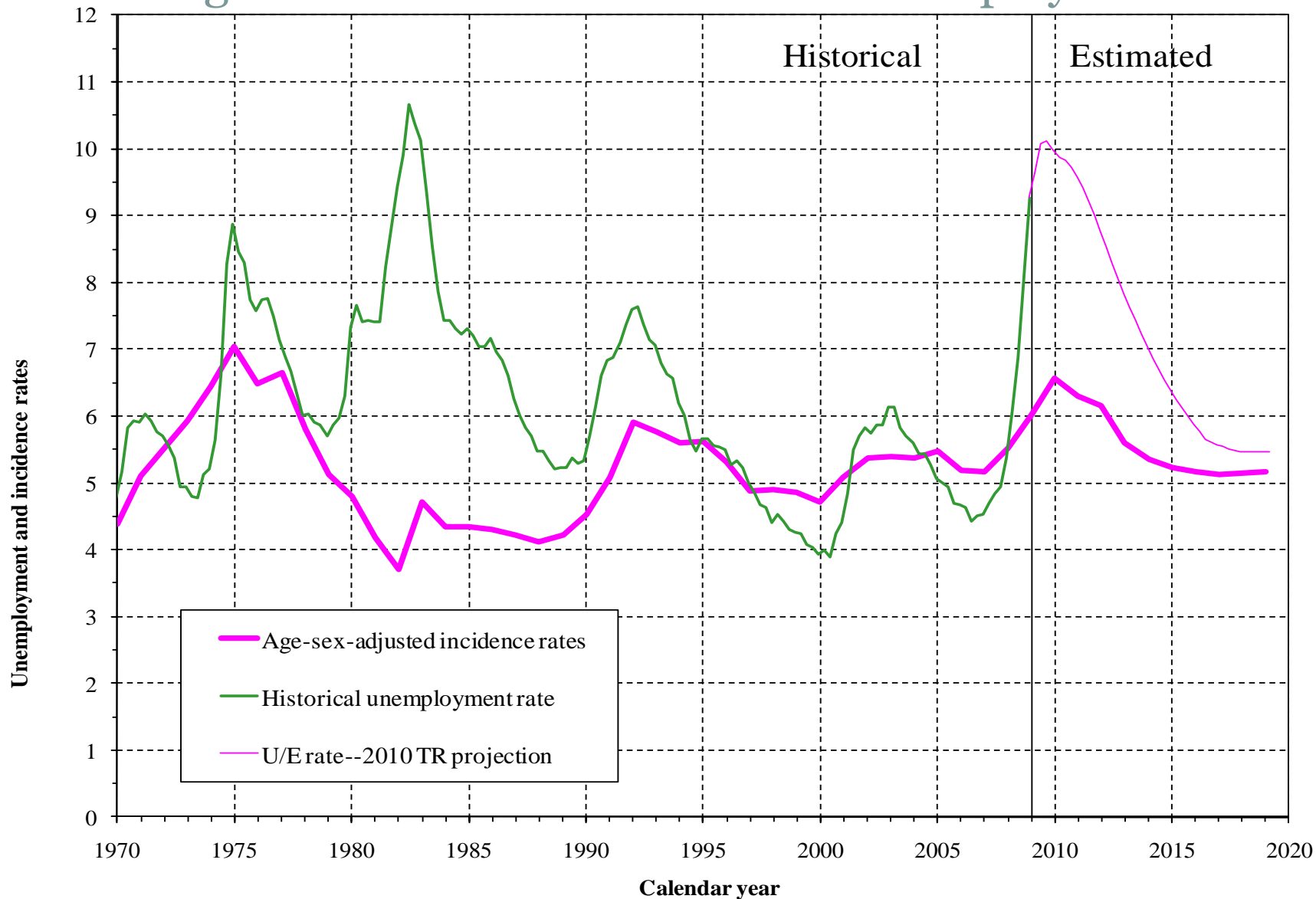
Recovery Rates Remain Low

DI Disabled Worker Recovery Rates (per 1,000 Beneficiaries)
Comparison of Gross and Age-Sex-Adjusted to the Year 2000
Disabled Worker Population



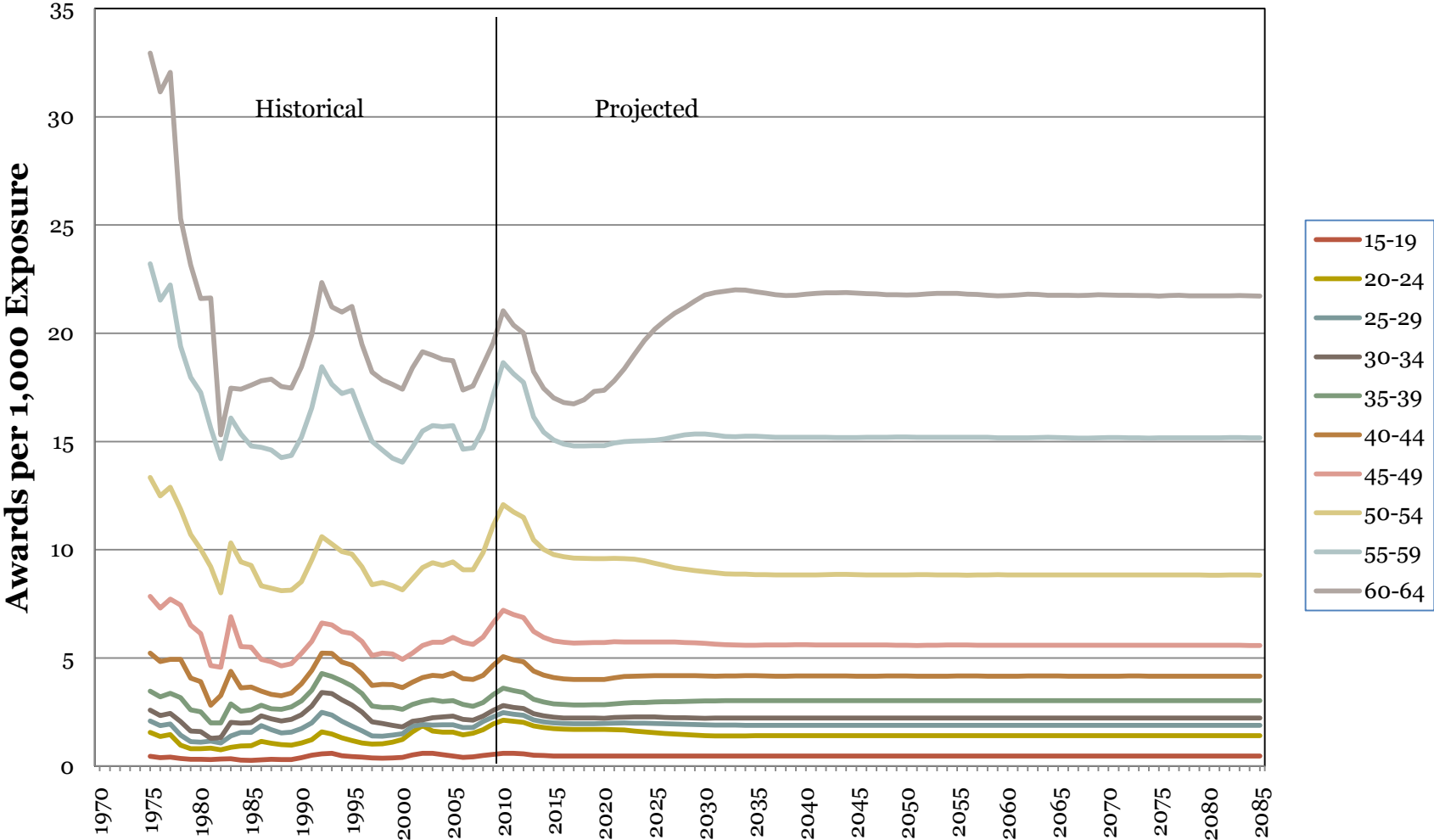
Projection Methods and Assumptions for Incidence Rates

Short Range Model Reflects Patterns of Unemployment Rates



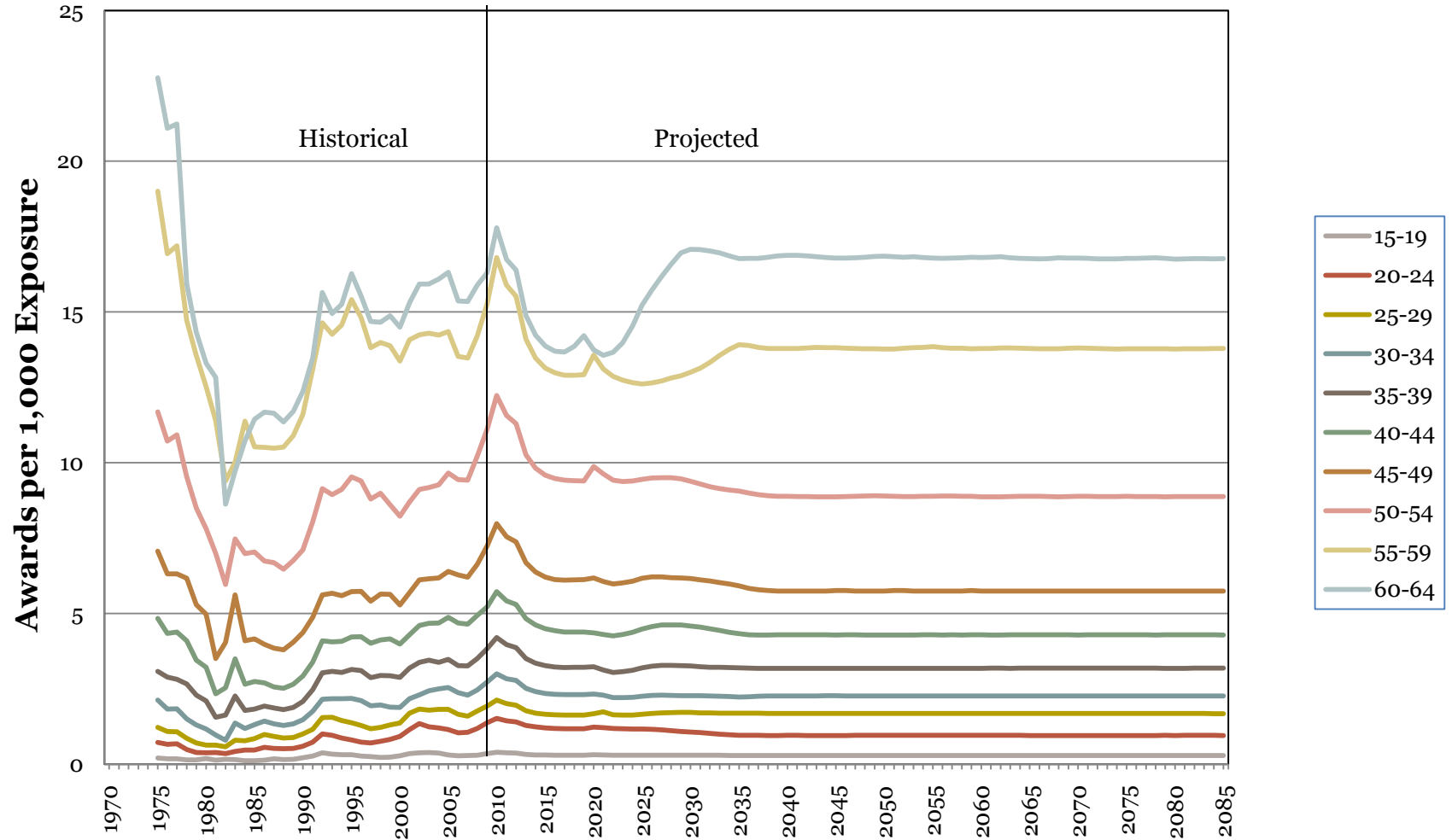
Long Range Model Tracks Retirement Age and Ultimate Rate Assumptions

Male DI Disabled Worker Award Incidence Rate



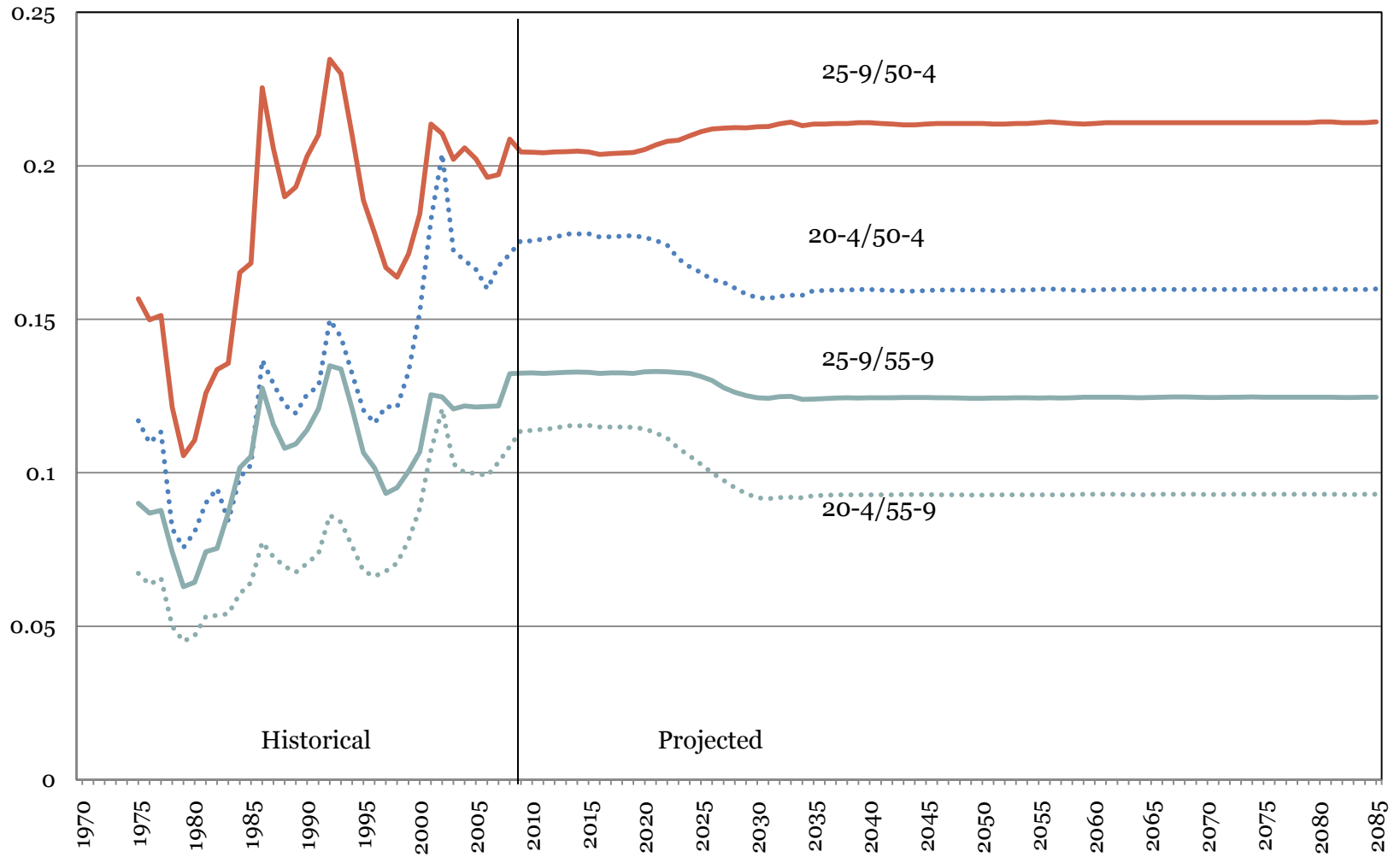
Long Range Ultimate Incidence Rates Assumed to Stabilize

Female DI Disabled Worker Award Incidence Rate

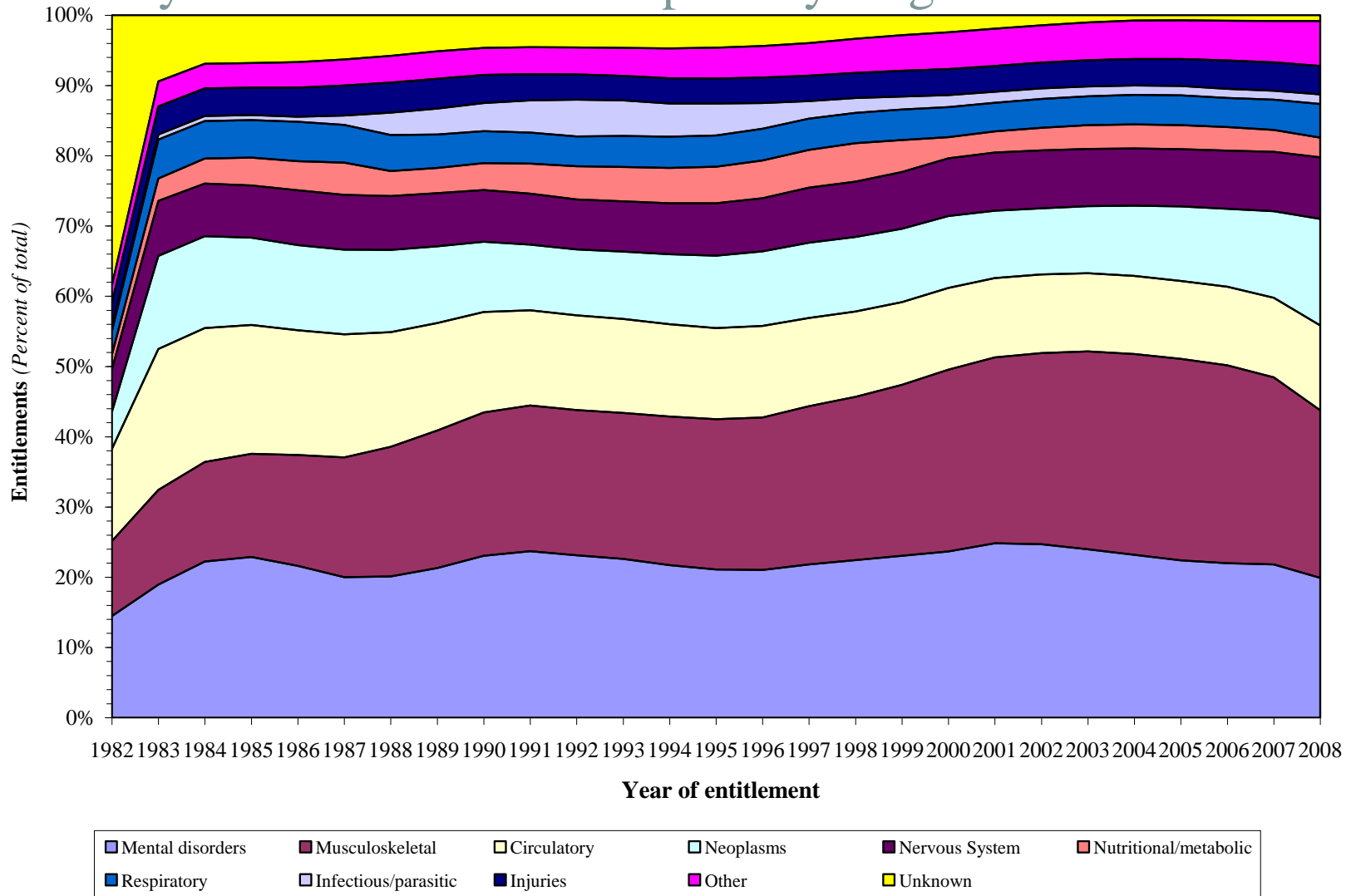


Additional Information for Future Discussion

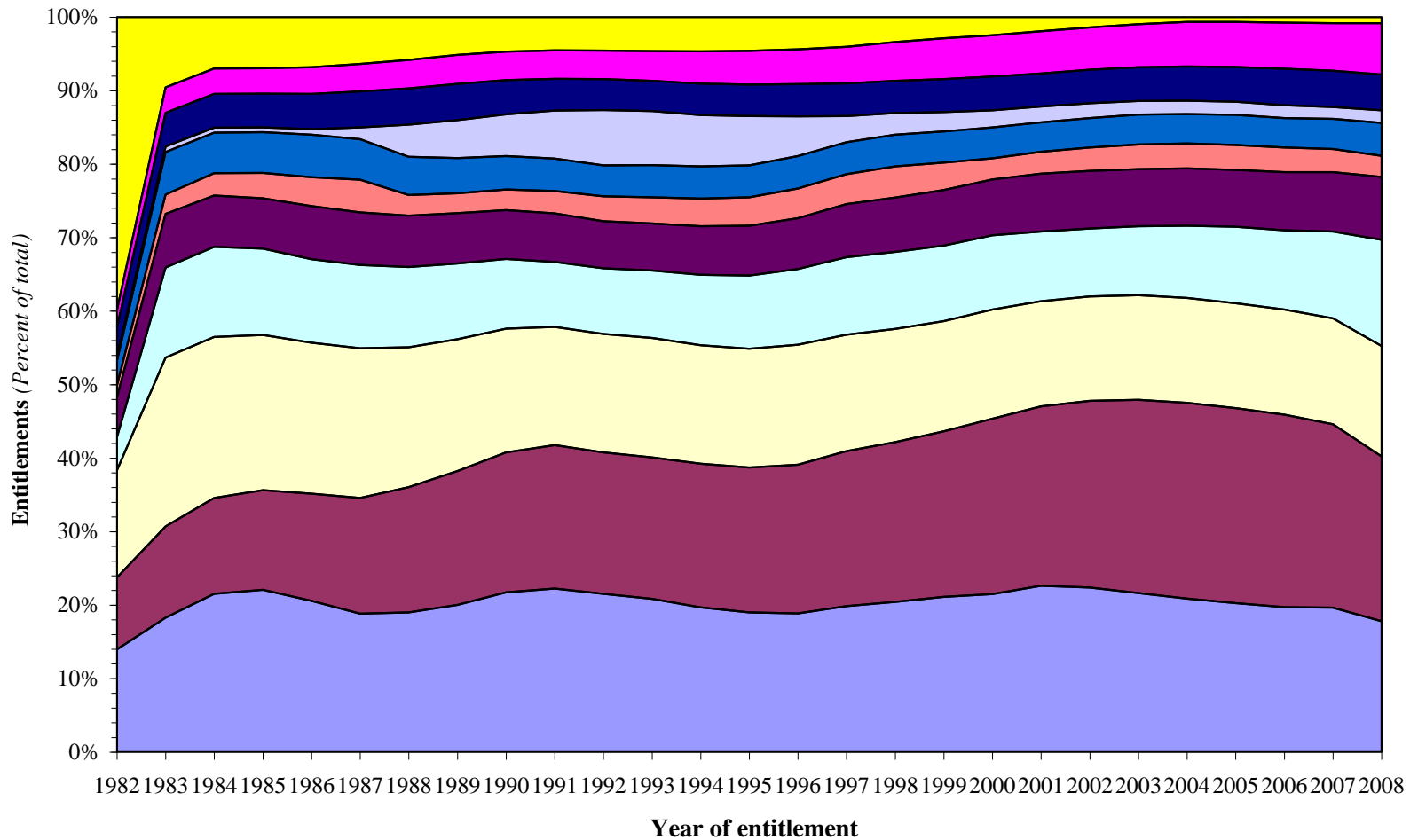
Male Disabled Worker Award Incidence Rates: Ratio of Young to Old



DIBs awarded through June 2009 by year of entitlement and primary diagnosis code



DIBs awarded through June 2009 by year of entitlement and primary diagnosis code, *males all ages*



DIBs awarded through June 2009 by year of entitlement and primary diagnosis code, *females all ages*

