



U.S. IMMIGRATION

PROJECTING IMMIGRATION AS IT AFFECTS
THE SOCIAL SECURITY AREA

January 28, 2011
Technical Panel
Washington, DC

Michael Morris
Social Security Administration

Overview



2

- Definitions
- Importance of Projections
- Projection Methodology
- Results
- More Information



What is Migration?

3

Five types of migration:

- 1) Legal immigration
- 2) Legal emigration
- 3) Other-than-legal (OTL) immigration
- 4) Other-than-legal (OTL) emigration
- 5) Adjustments of status (transfers)

Legal Immigration/Emigration



4

□ Legal immigration:

Foreign-born individuals, either new arrivals or adjustments of status, who are granted legal permanent resident (LPR) status.

□ Legal emigration:

LPRs and native-born citizens who leave the Social Security area.

OTL Immigration/Emigration



5

□ OTL immigration:

Individuals who enter the Social Security area without LPR status, such as undocumented immigrants, temporary workers, and students.

□ OTL emigration:

Individuals from the OTL population who leave the Social Security area or adjust status to become LPRs.



Adjustments of Status

6

- Adjustments of status (transfers):
 - Individuals who adjust their status (transfer) from the OTL population to become LPRs.
- They are counted in the number of legal immigrants.
- They are counted in the number of OTL emigrants.



Net Immigration

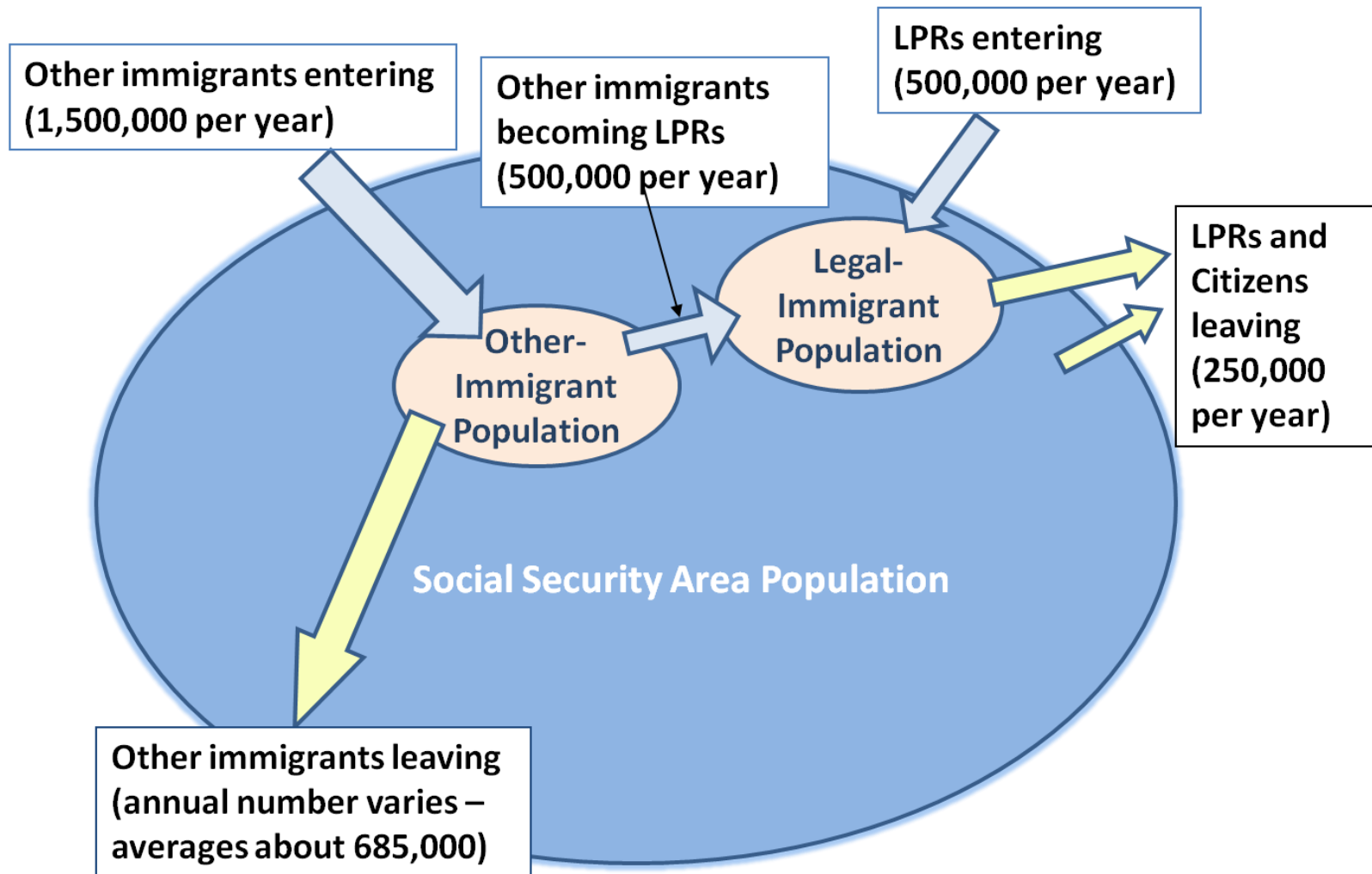
7

- Net legal immigration =
legal immigration – legal emigration

- Net other (OTL) immigration =
OTL immigration – OTL emigration

- Net (total) immigration =
net legal immigration + net other immigration

Immigration Flows



OTL Participation



9

- Less likely to work in covered employment
- Much less likely to become insured for benefits



Projections – Background

10

- Projections based on current law
 - ▣ Legislative proposals are an unknown
 - ▣ Need to estimate effect of legislative changes
- Assumptions set by Board of Trustees
 - ▣ Total annual levels



Projections – Assumptions

2010 Trustees Report, Intermediate Assumptions

11

Net (total) immigrants:	≈1,065,000
Net legal immigrants:	750,000
Legal immigrants, new:	500,000
Legal immigrants, transfers:	500,000
Legal emigrants:	(250,000)
Net OTL immigrants:	≈315,000
OTL immigrants:	1,500,000
OTL emigrants, transfers:	(500,000)
OTL emigrants, leave:	≈(685,000)



Projections – Assumptions

2010 Trustees Report, Low-Cost Assumptions

12

Net (total) immigrants:	≈1,370,000
Net legal immigrants:	960,000
Legal immigrants, new:	600,000
Legal immigrants, transfers:	600,000
Legal emigrants:	(240,000)
Net OTL immigrants:	≈410,000
OTL immigrants:	1,800,000
OTL emigrants, transfers:	(600,000)
OTL emigrants, leave:	≈(790,000)



Projections – Assumptions

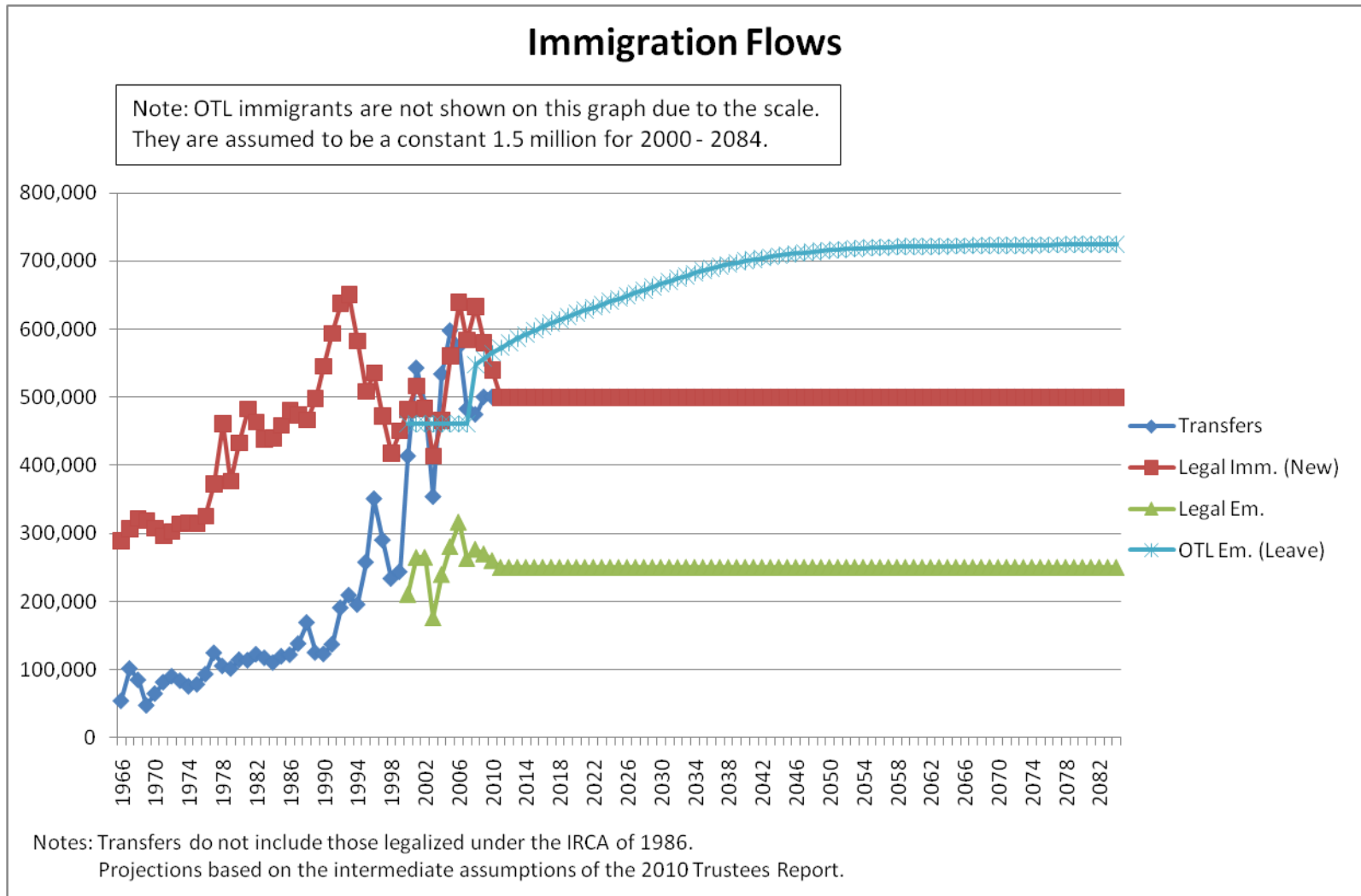
2010 Trustees Report, High-Cost Assumptions

13

Net (total) immigrants:	≈ 780,000
Net legal immigrants:	560,000
Legal immigrants, new:	400,000
Legal immigrants, transfers:	400,000
Legal emigrants:	(240,000)
Net OTL immigrants:	≈ 220,000
OTL immigrants:	1,200,000
OTL emigrants, transfers:	(400,000)
OTL emigrants, leave:	≈ (580,000)

Projections – Assumptions Graph

2010 Trustees Report, Intermediate Assumptions



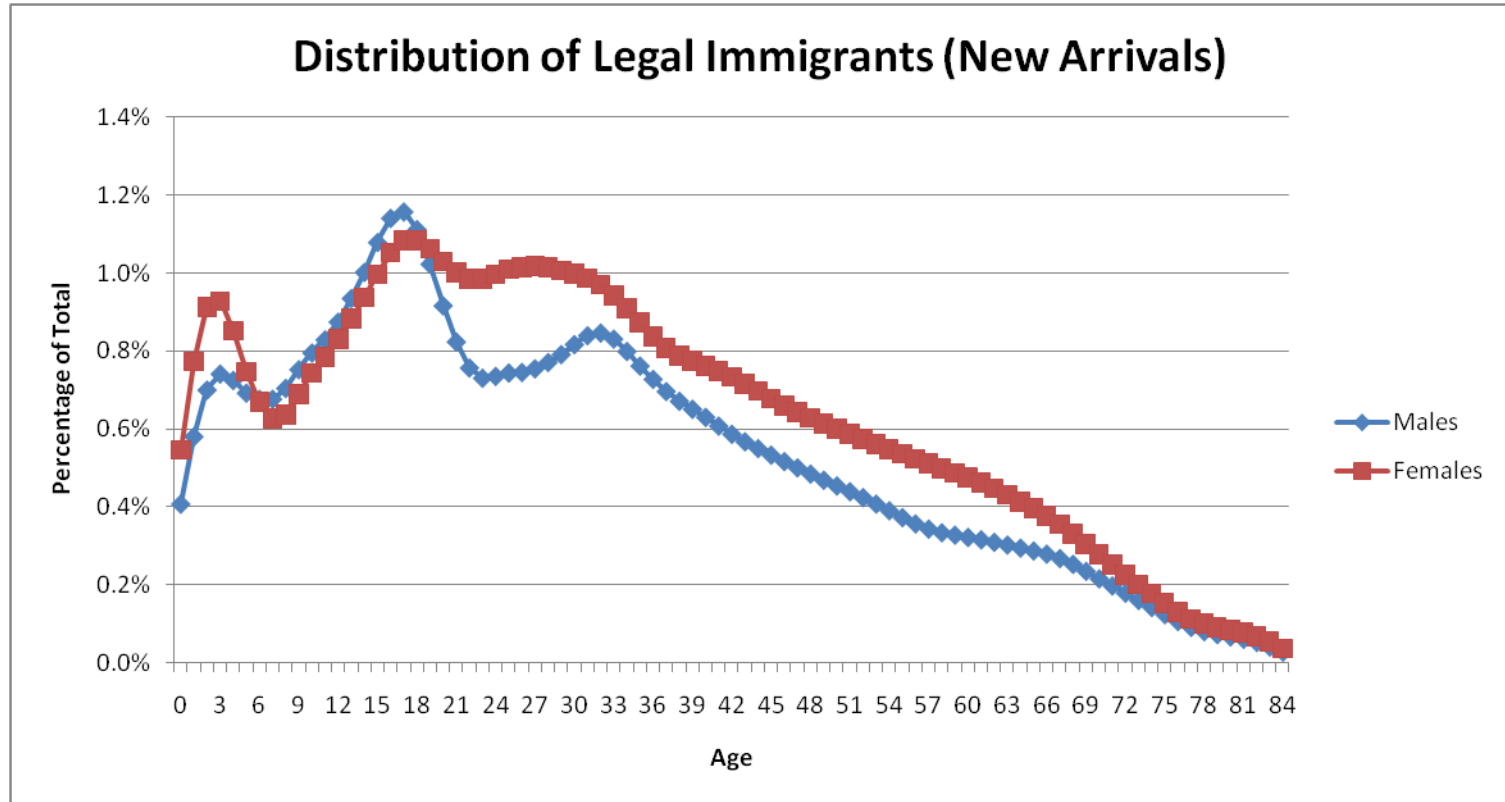


Projections – Distributions

15

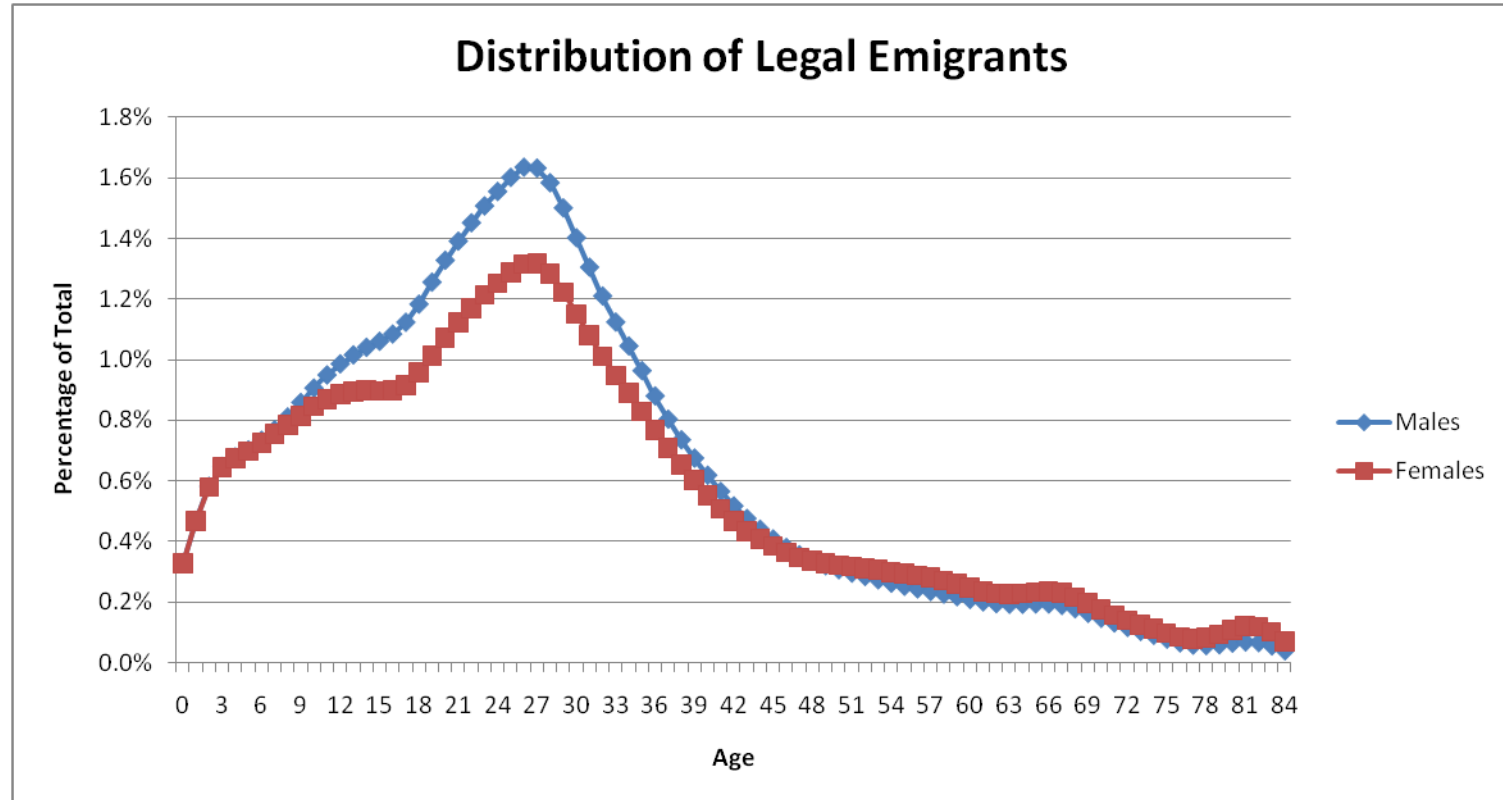
- All 5 immigration categories are projected by single year of age (0 – 84) and sex (male, female).
- In general, a distribution is used to break out the total from the assumptions.
- Annual distributions are constant for all categories, except OTL emigration.

Distribution – Legal Immigrants



Based on an average of the most recent 10 years of data from DHS, by single year of age and sex.

Distribution – Legal Emigrants

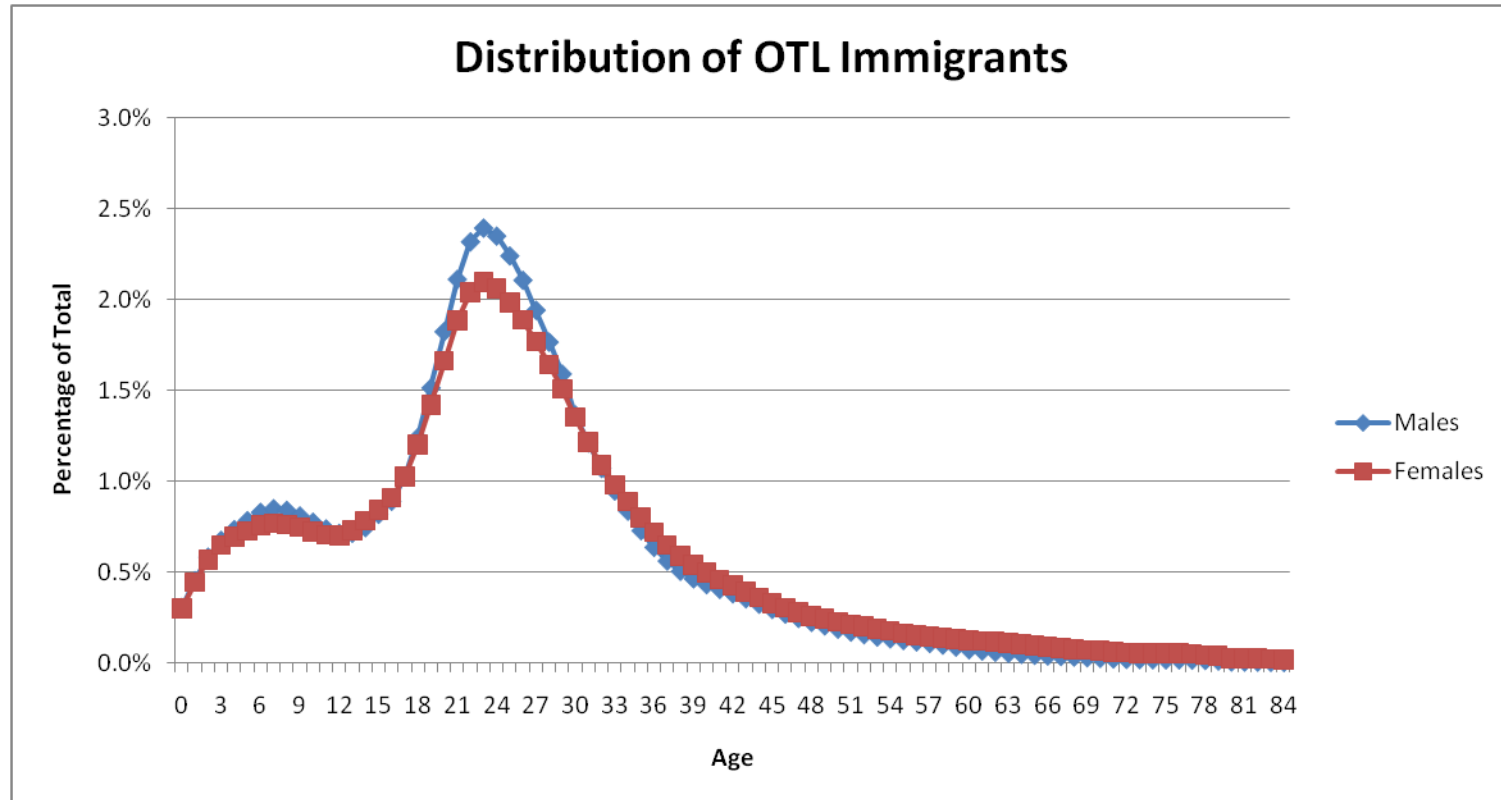


Based on estimates of foreign-born emigration between the 1980 and 1990 Census.

Distribution – OTL Immigrants

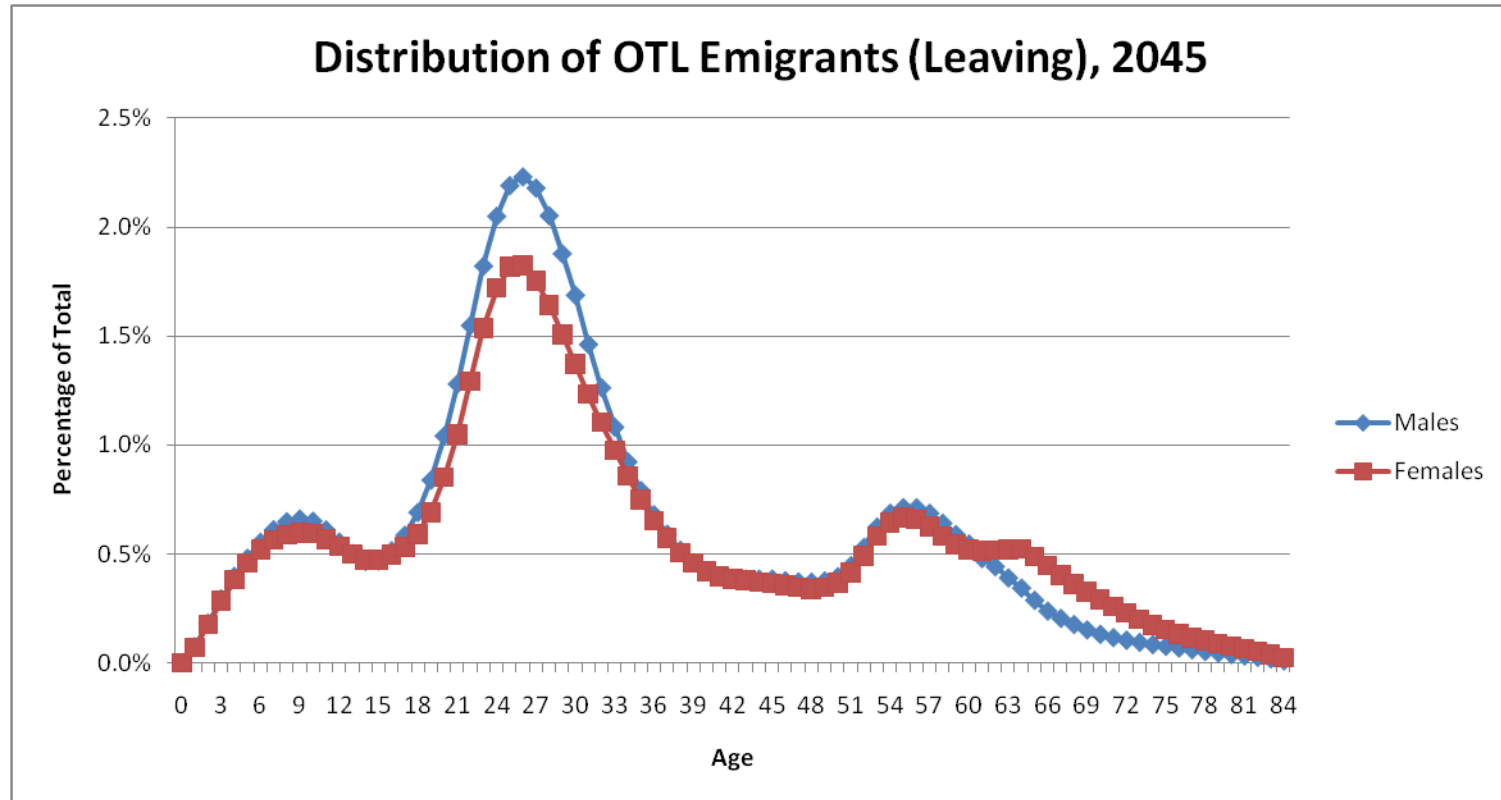


18



Based on a blend of unpublished estimates from Census (1975 – 1980) and the last 10 years of transfers data from DHS.

Distribution – OTL Emigrants

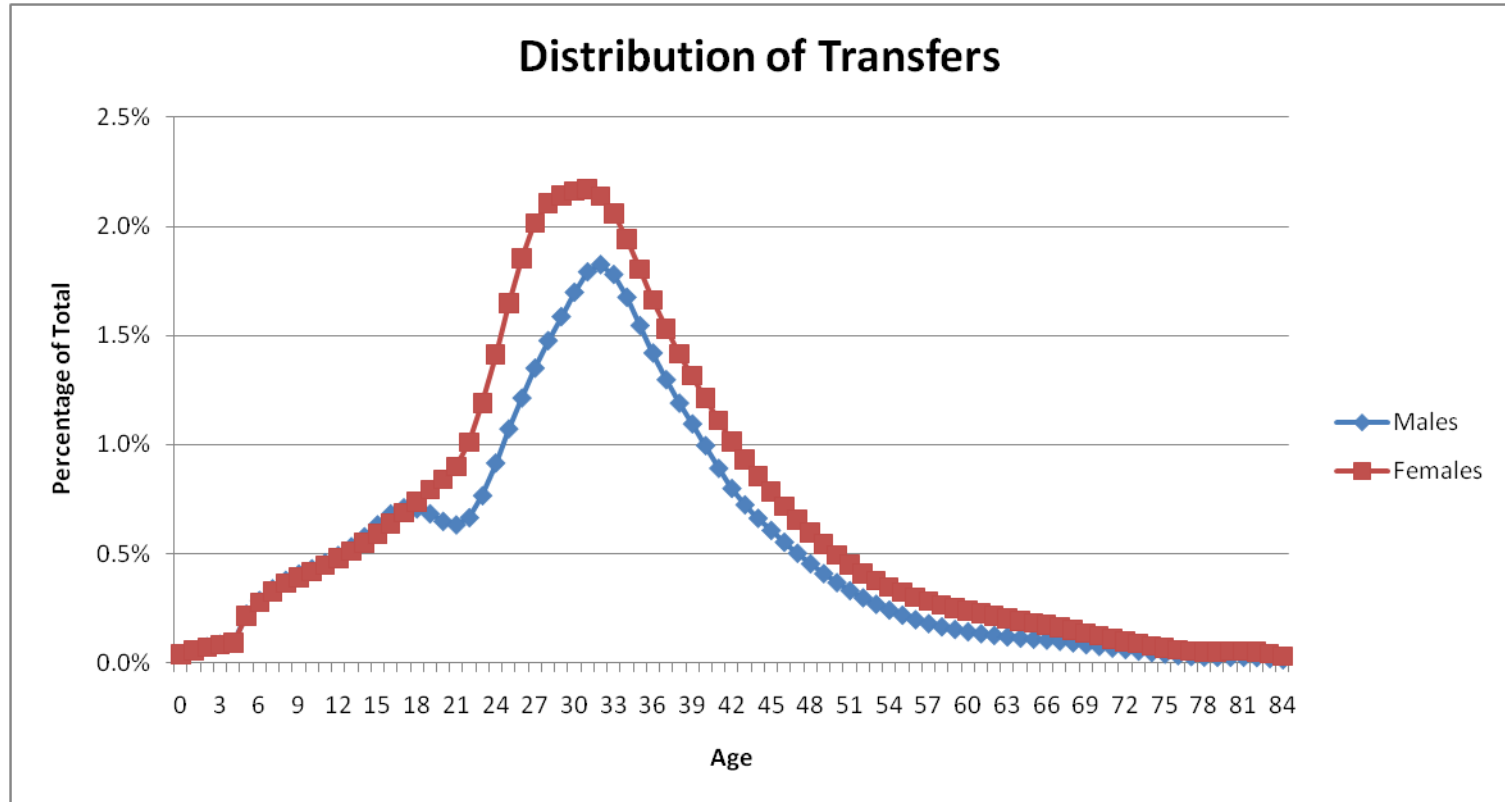


Annual distribution varies. It is based on a fixed number of exits and a rate applied to the OTL population.

Distribution – Transfers



20



Based on an average of the most recent 10 years of data from DHS, by single year of age and sex.



Results – Population Stocks

21



Total population



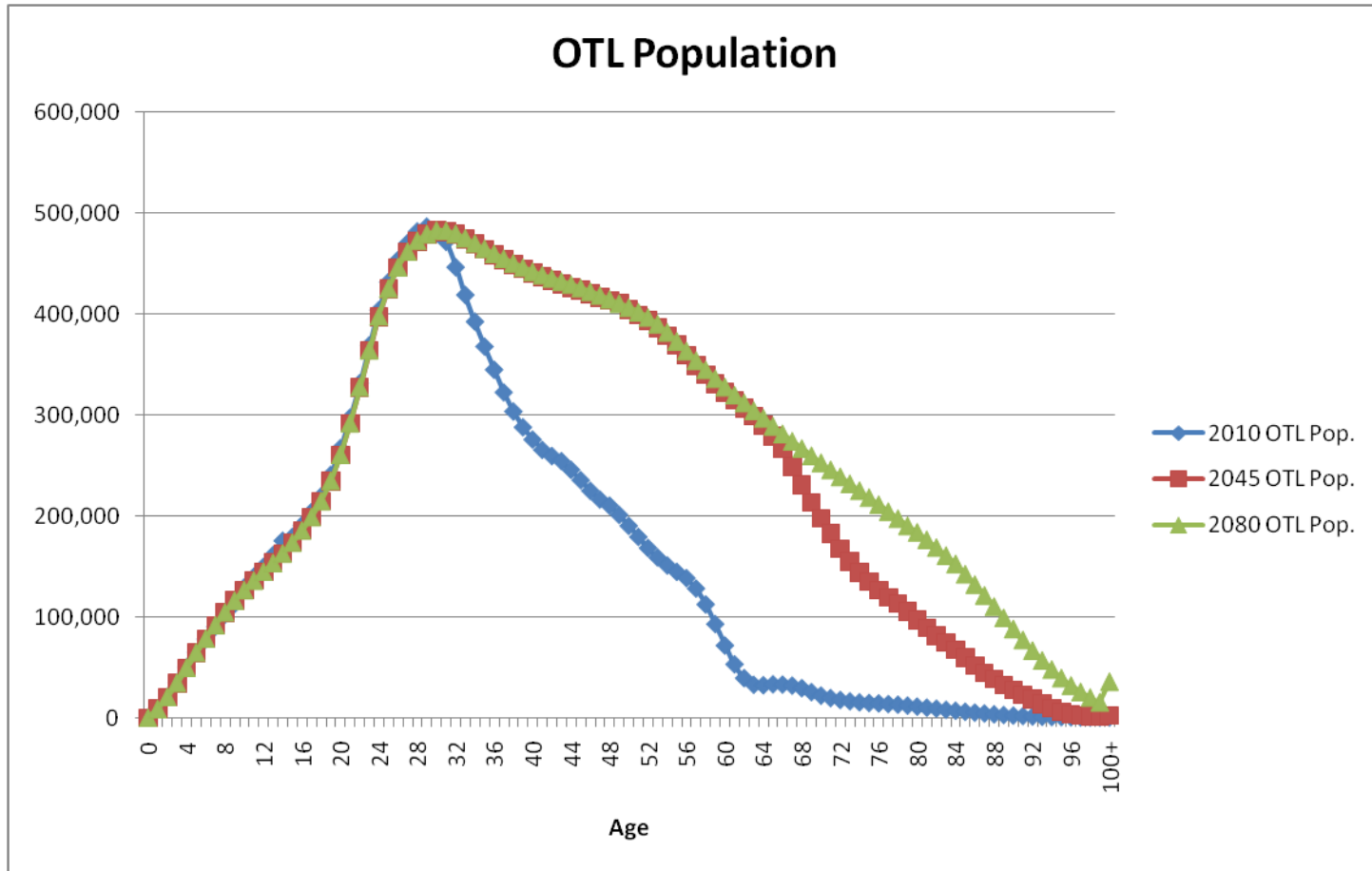
Foreign-born population



OTL population

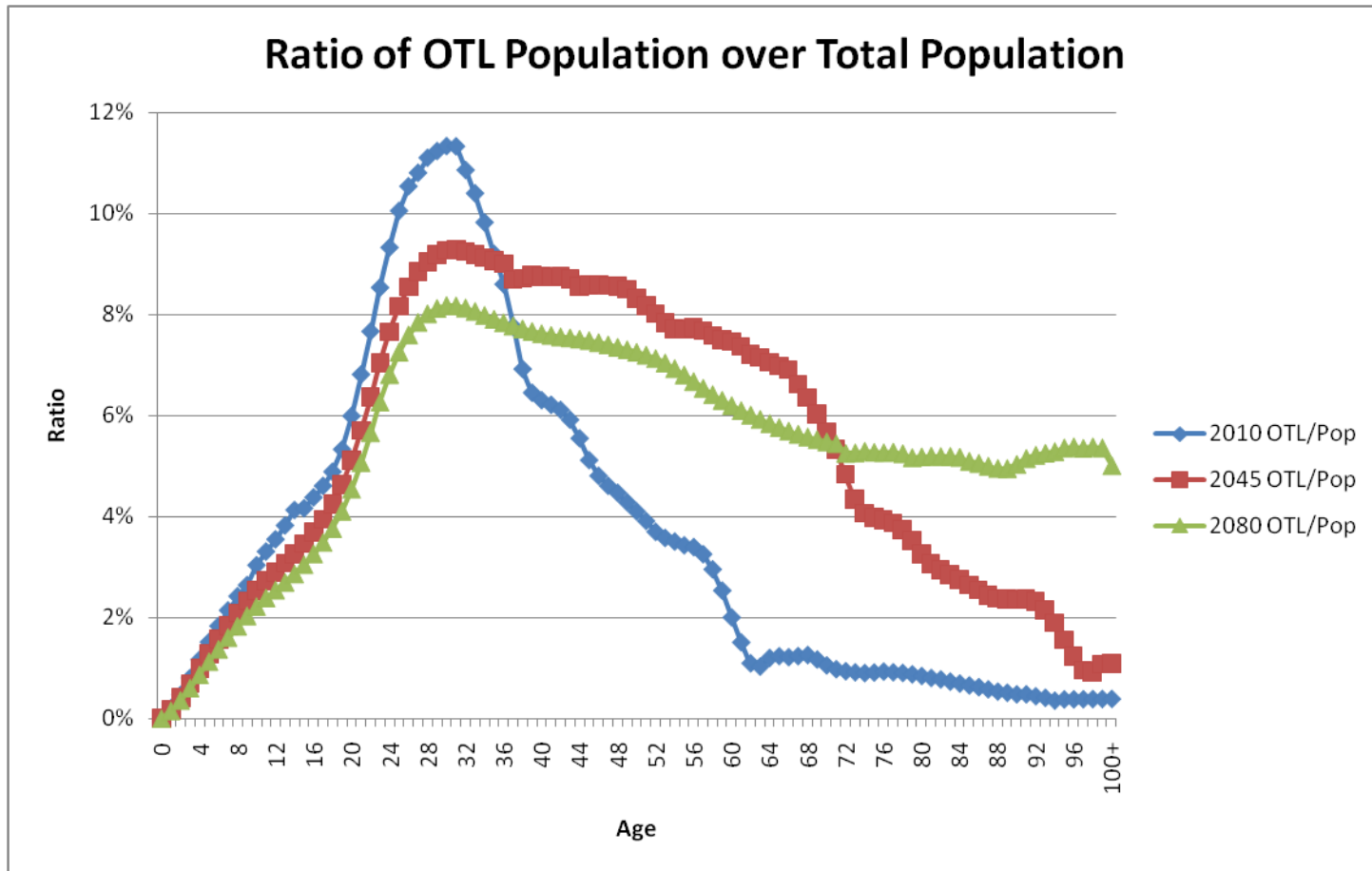
Results – OTL Population

2010 Trustees Report, Intermediate Assumptions



Results – OTL Percentages

2010 Trustees Report, Intermediate Assumptions





Further Information

24

□ 2010 OASDI Trustees Report

<http://www.socialsecurity.gov/OACT/TR/2010/tr2010.pdf>

□ Actuarial Note, Number 148

http://www.socialsecurity.gov/OACT/NOTES/pdf_notes/note148.pdf

□ Model Documentation

http://www.socialsecurity.gov/OACT/TR/2010/documentation_2010.pdf

□ Contact: Michael Morris (M.Morris@ssa.gov)