

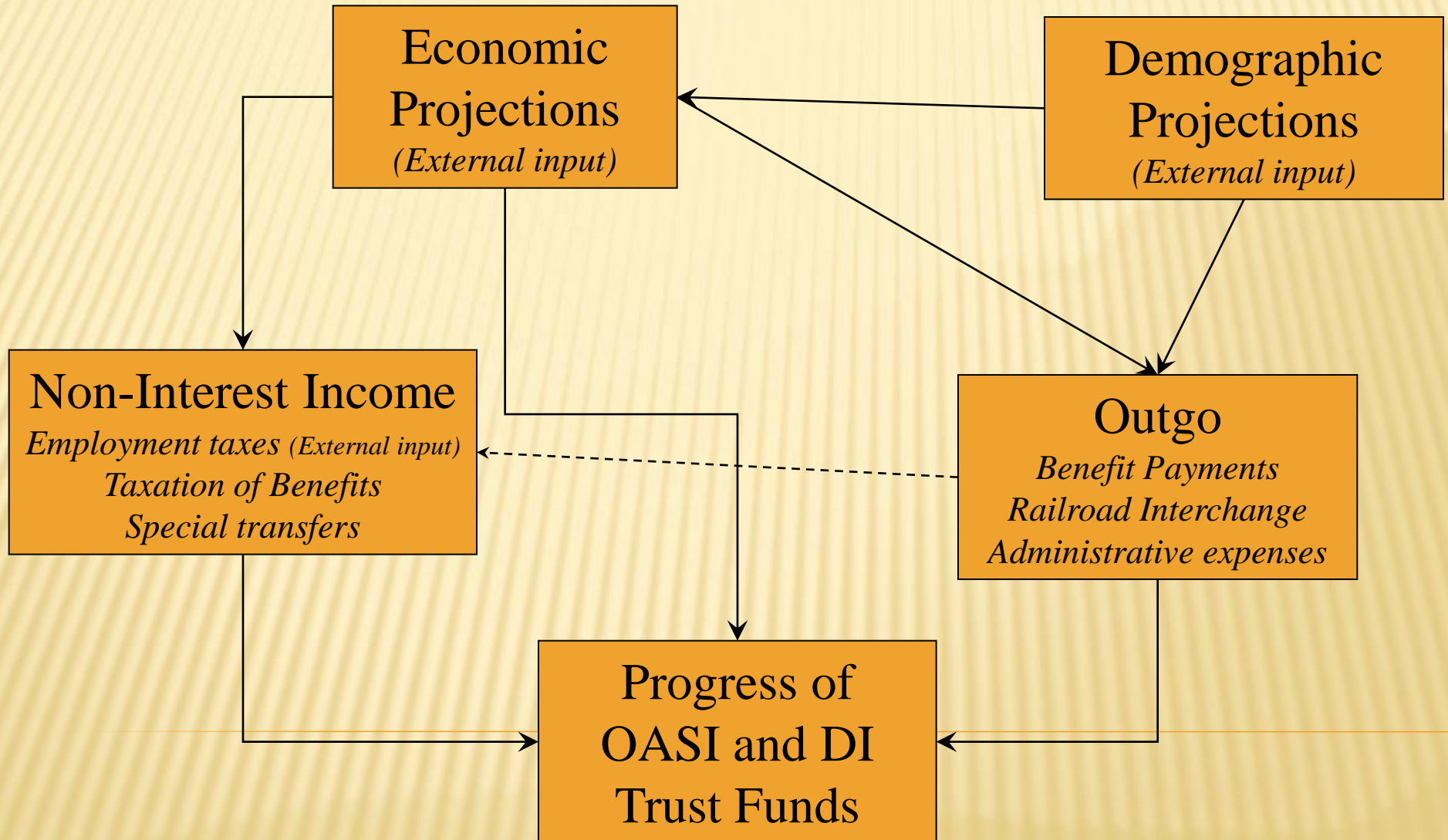
2011 TECHNICAL PANEL SHORT-RANGE OASDI PROJECTIONS

SSA/OCACT

December 13, 2010

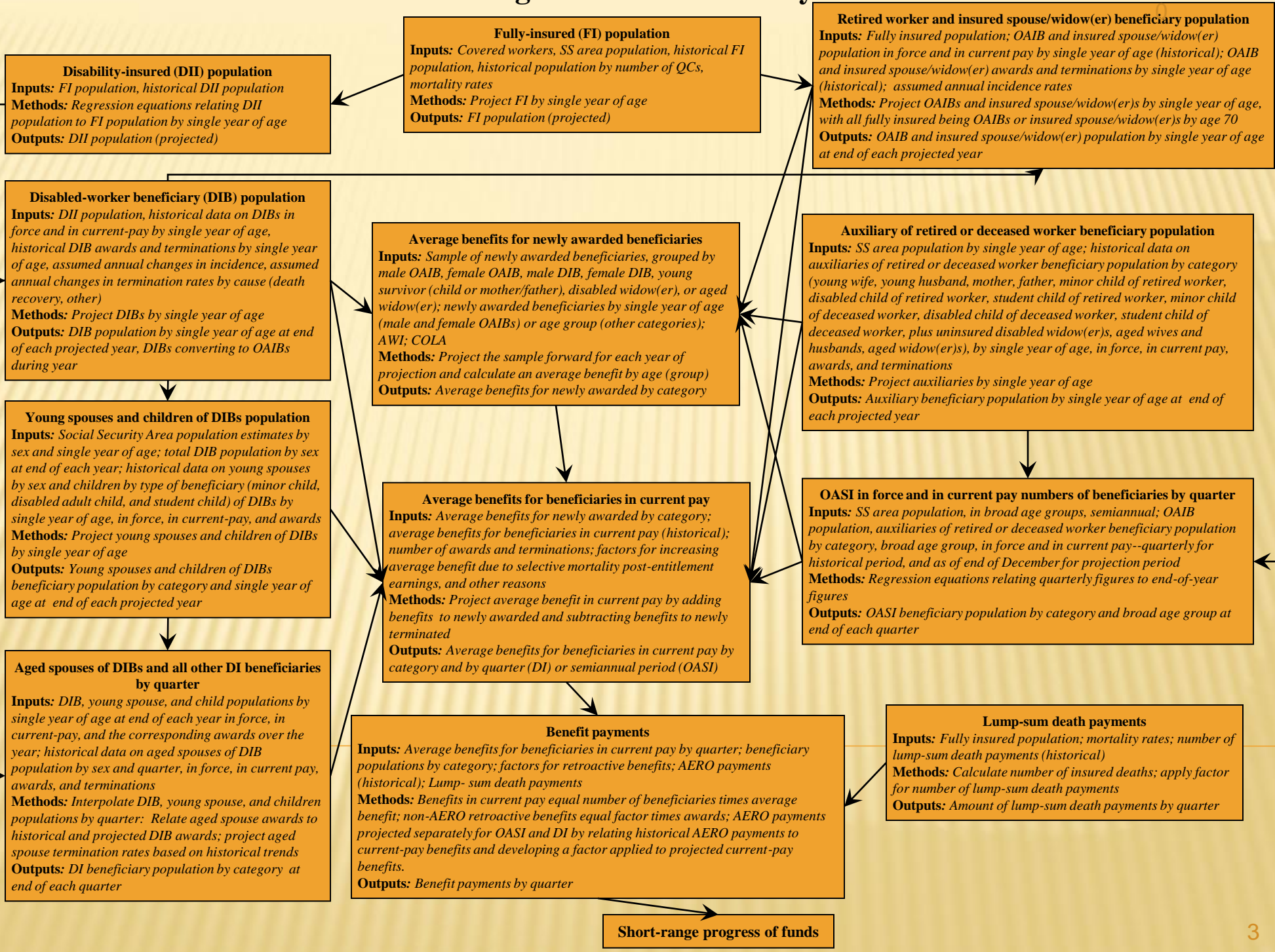
Overview of Short-Range OASDI Projection Methodology

12/13/2010

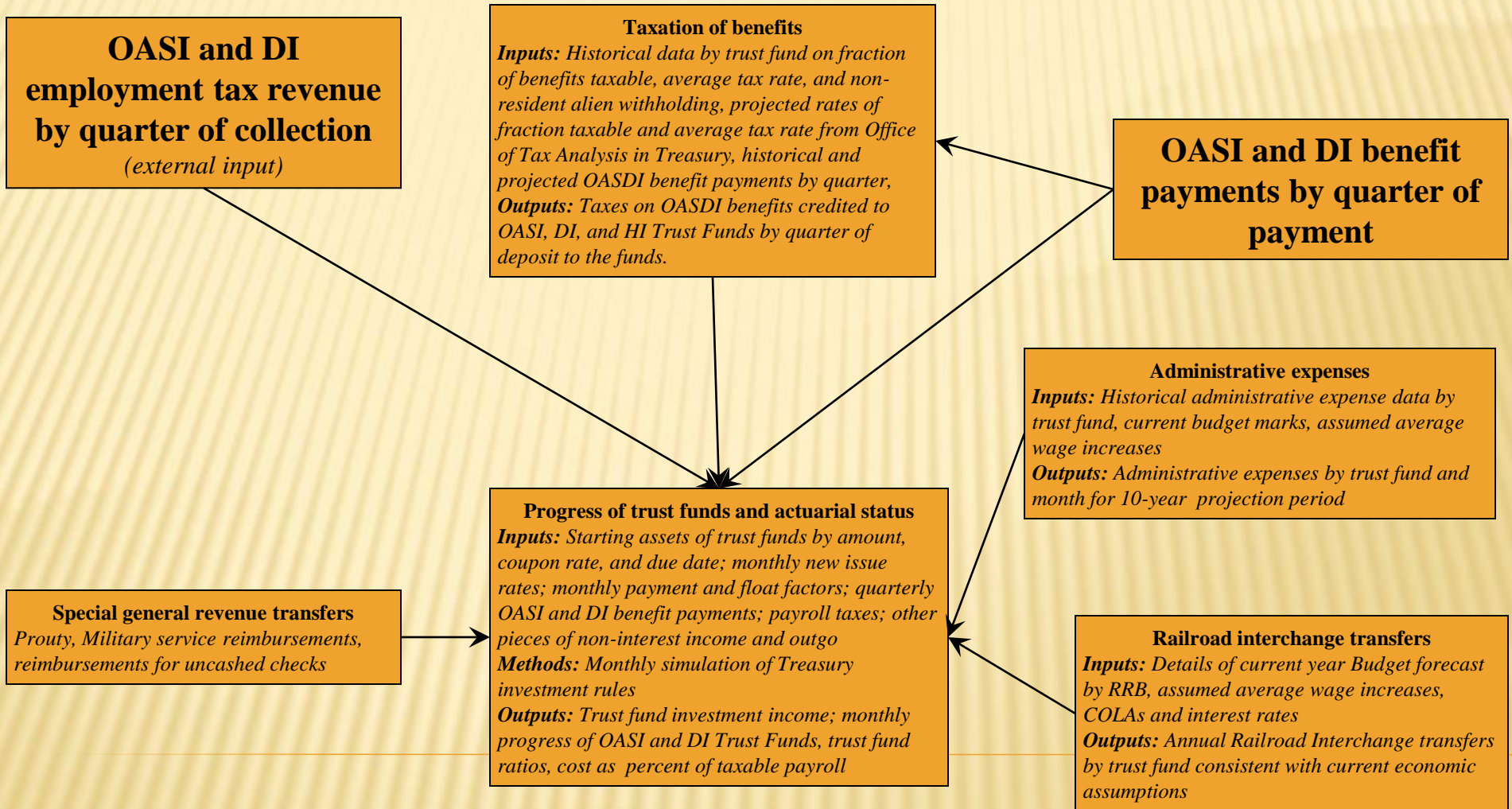


Short-Range OASDI Benefit Payments

12/13/201



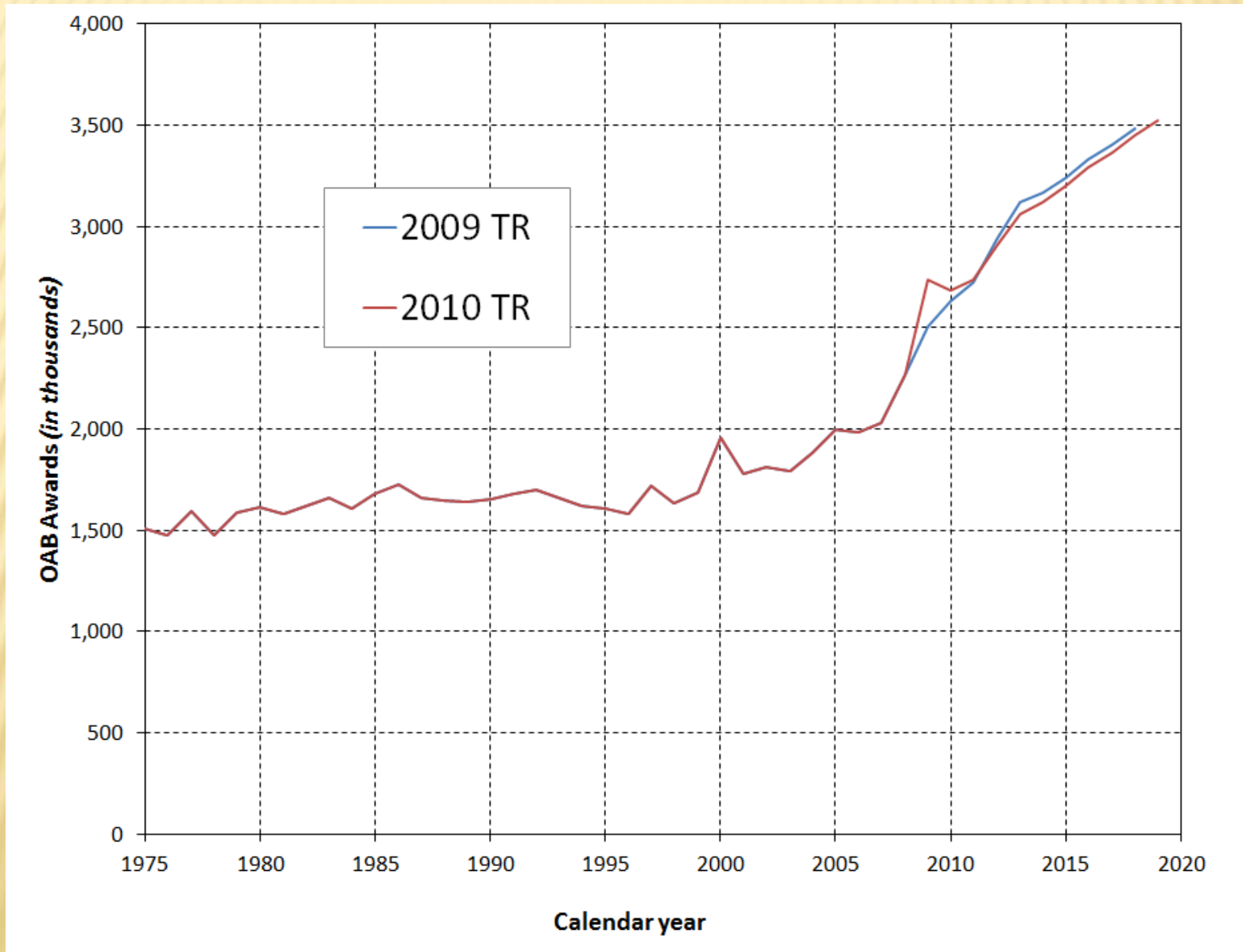
Short-Range Progress of Funds



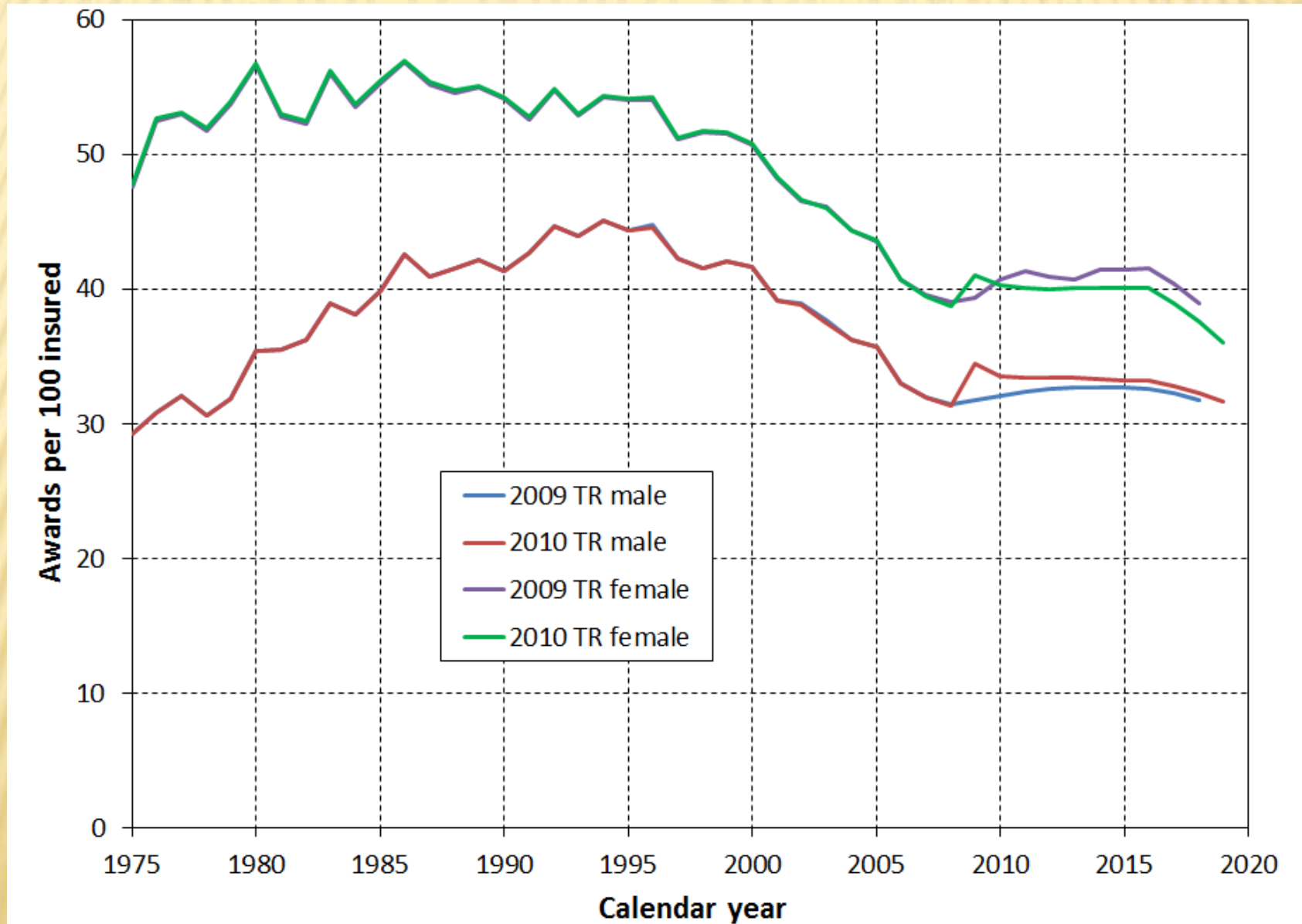
DRIVERS FOR OASI AND DI BENEFITS?

- ✘ Primary focus on worker beneficiaries
- ✘ Old-age beneficiaries (OABs)
 - + Retirement decision essentially bimodal
 - + Behavior at age 62 (regression)
 - + NRA (effects of gradual increase)
- ✘ Disabled workers (DIBs)
 - + Long-range ultimate rate (historical averages)
 - + Short-term variation (Effects of administrative actions, short-term economic effects, etc.)

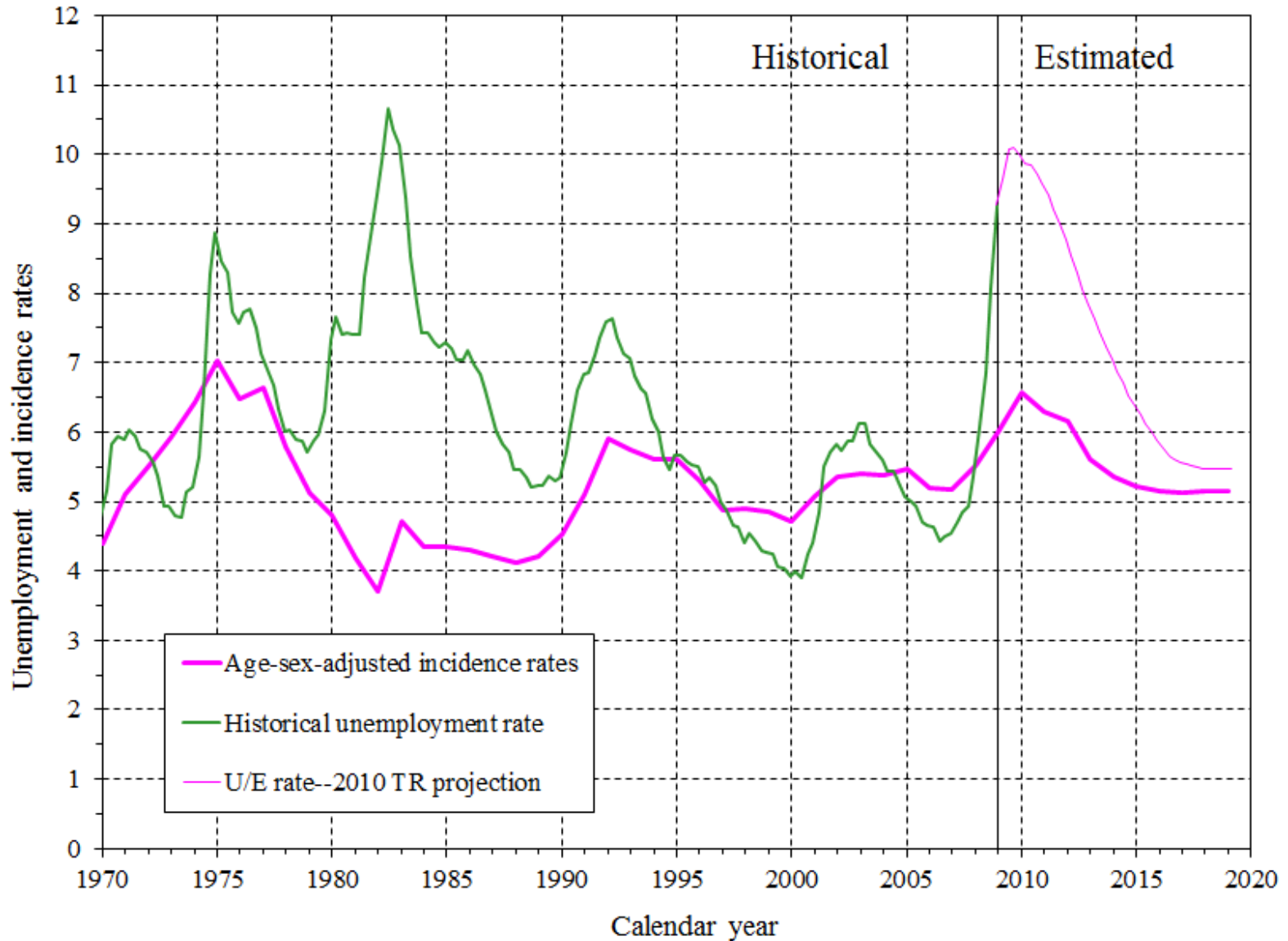
TOTAL RETIRED WORKER AWARDS



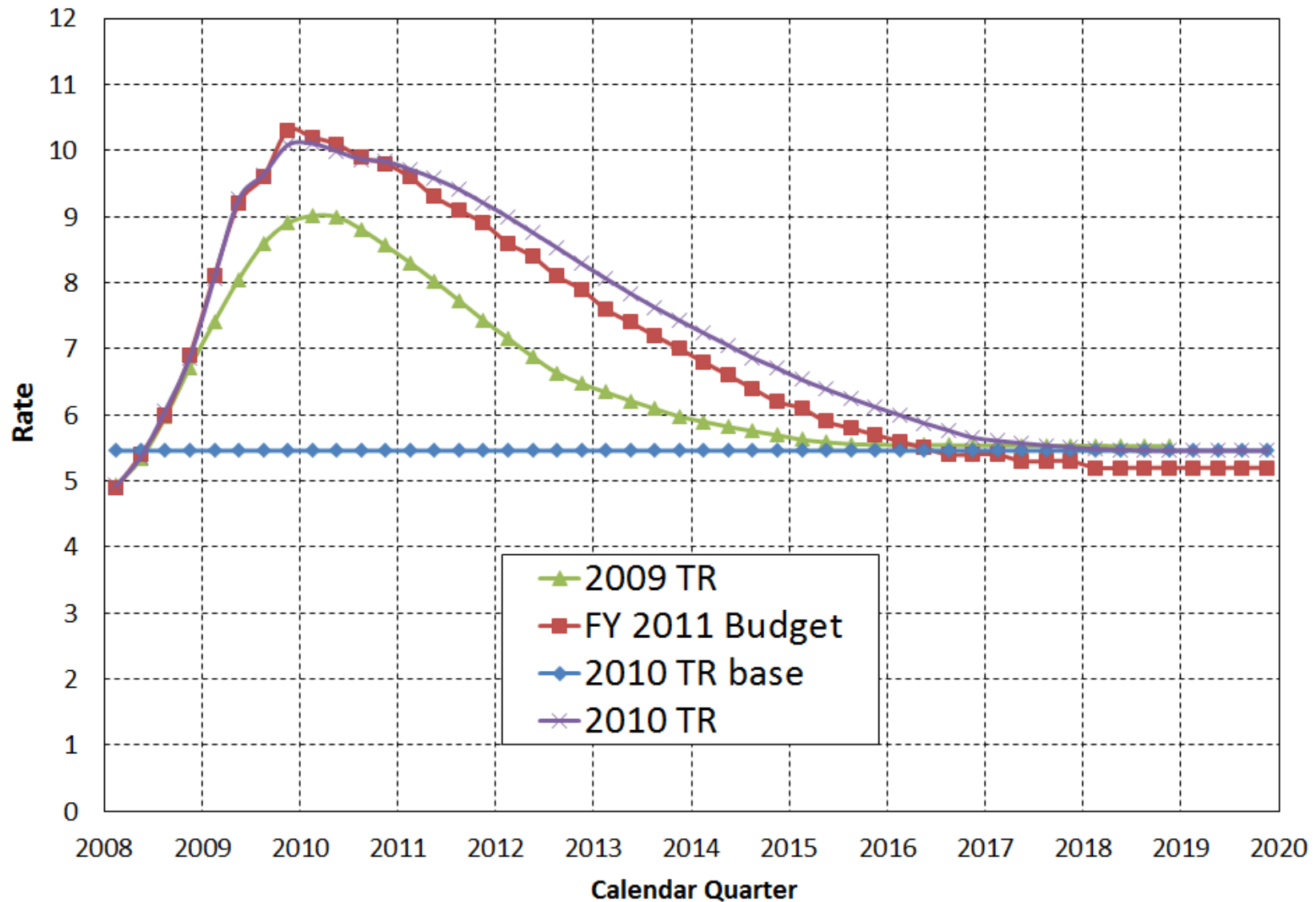
AGED INSURED INCIDENCE RATES—AGE 62



MODEL FOR SHORT-TERM DI INCIDENCE REFLECTS PATTERNS OF UNEMPLOYMENT



QUARTERLY CIVILIAN UNEMPLOYMENT RATES



AGE-SEX-ADJUSTED DIB INCIDENCE RATES

