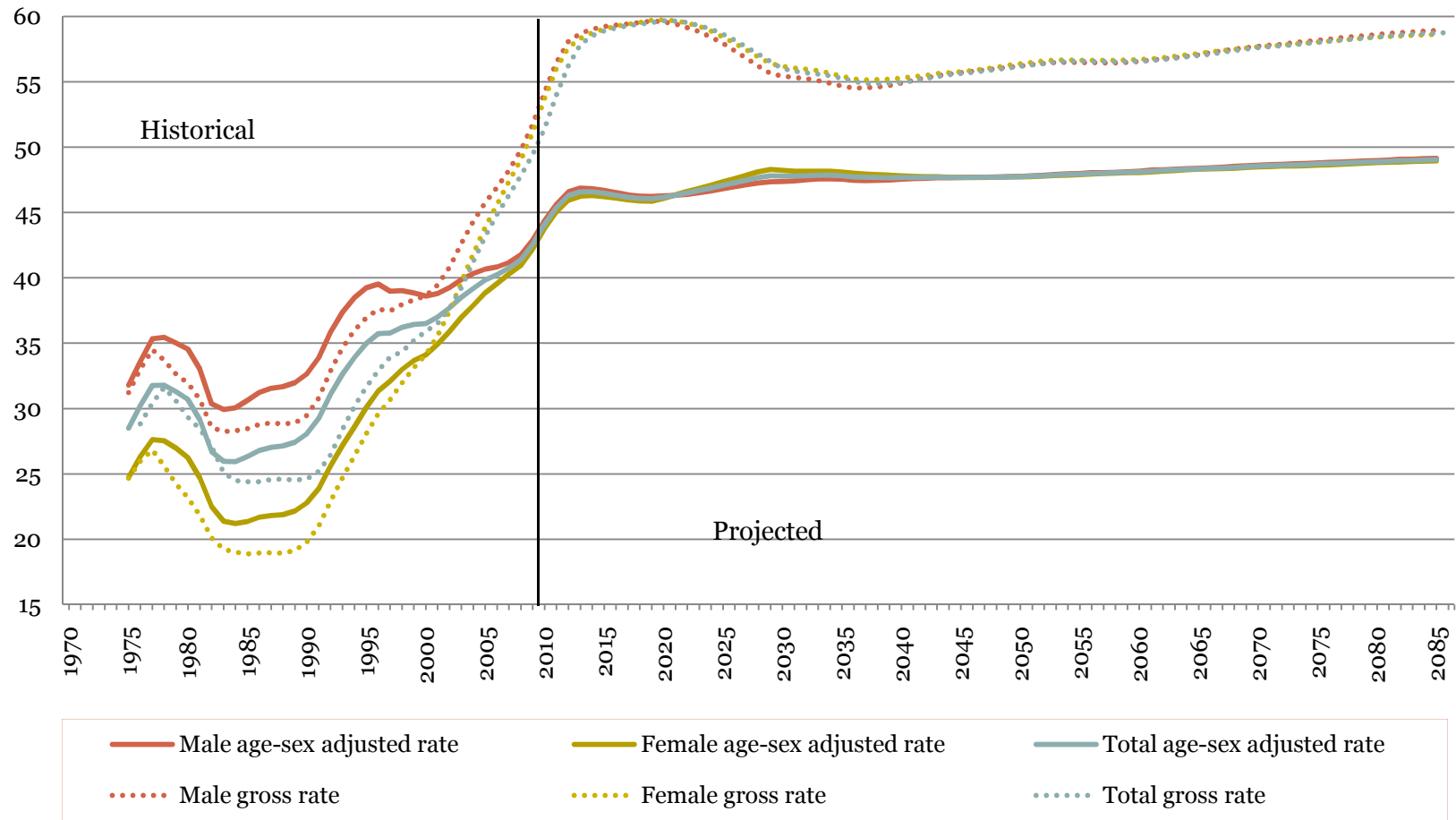


# 2011 Technical Panel 2010TR Disability Projections

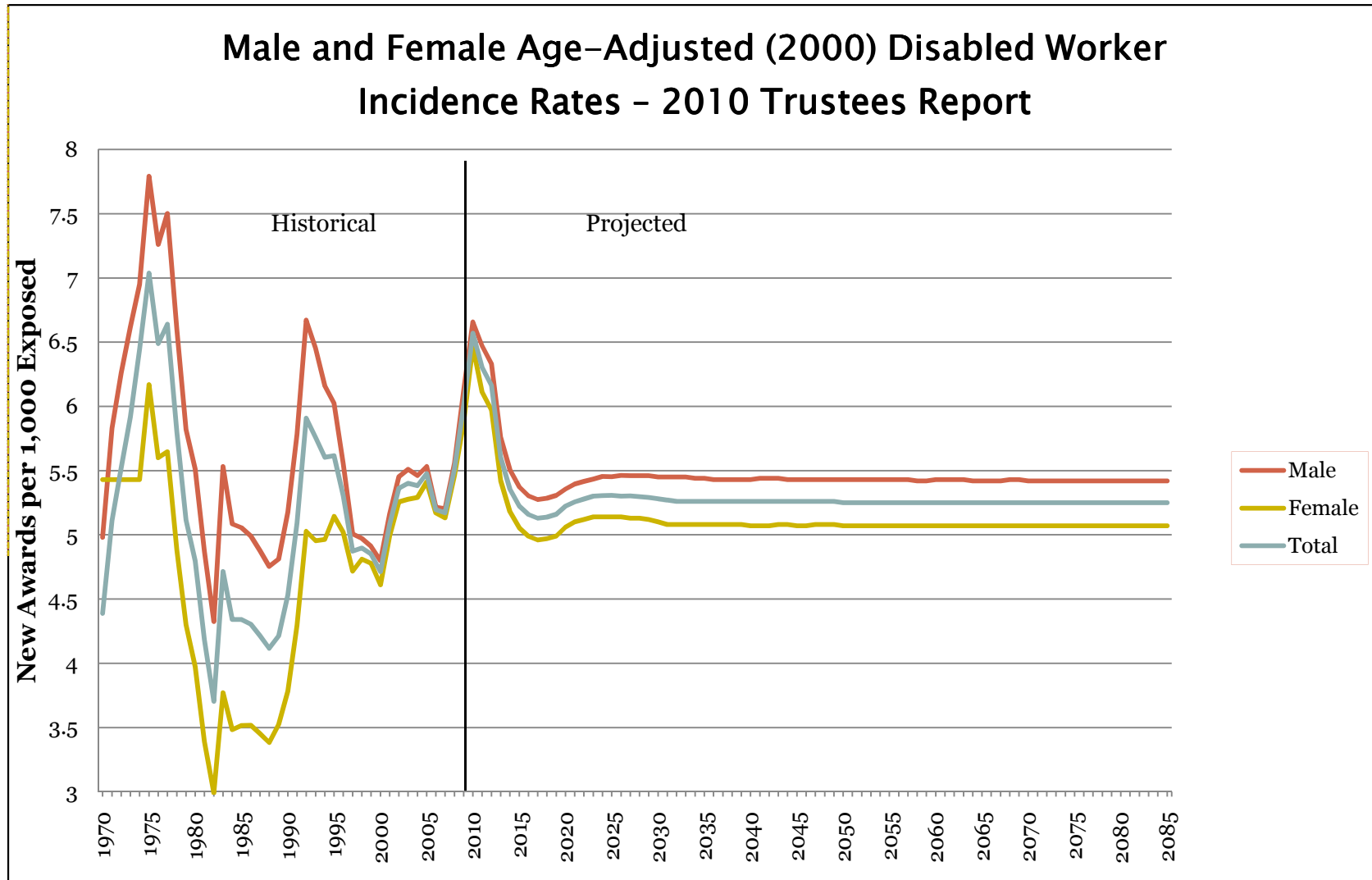
SSA/OCACT  
OCTOBER 1, 2010

# Disabled Worker Prevalence Rises Slowly in the Future

**DI Disabled Worker Prevalence Rates (per 1,000 Insured Population)  
Comparison of Gross and Age-Sex-Adjusted to the Year 2000 Insured  
Population**

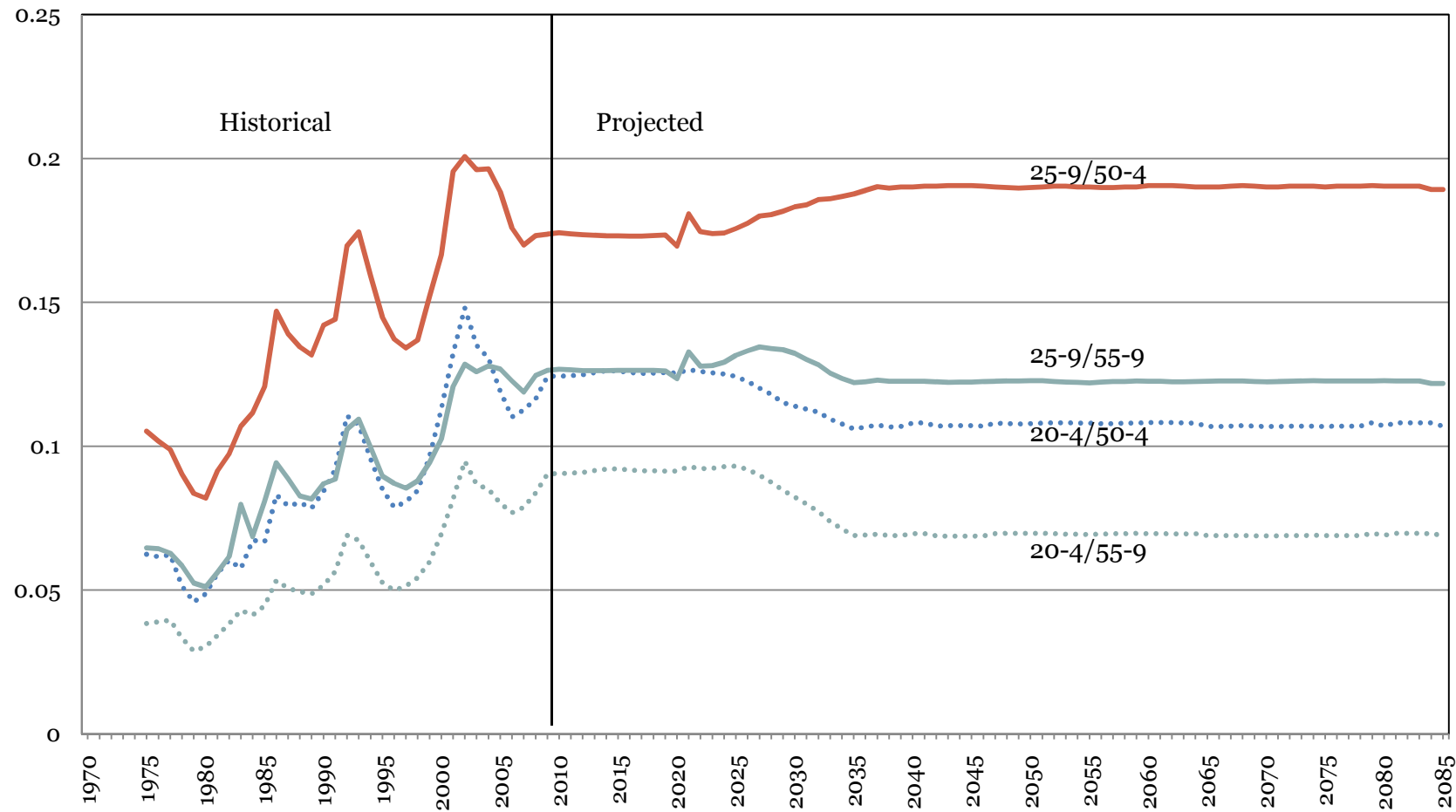


# Because (1) Overall Incidence Rates Stabilize Below Recent Peaks



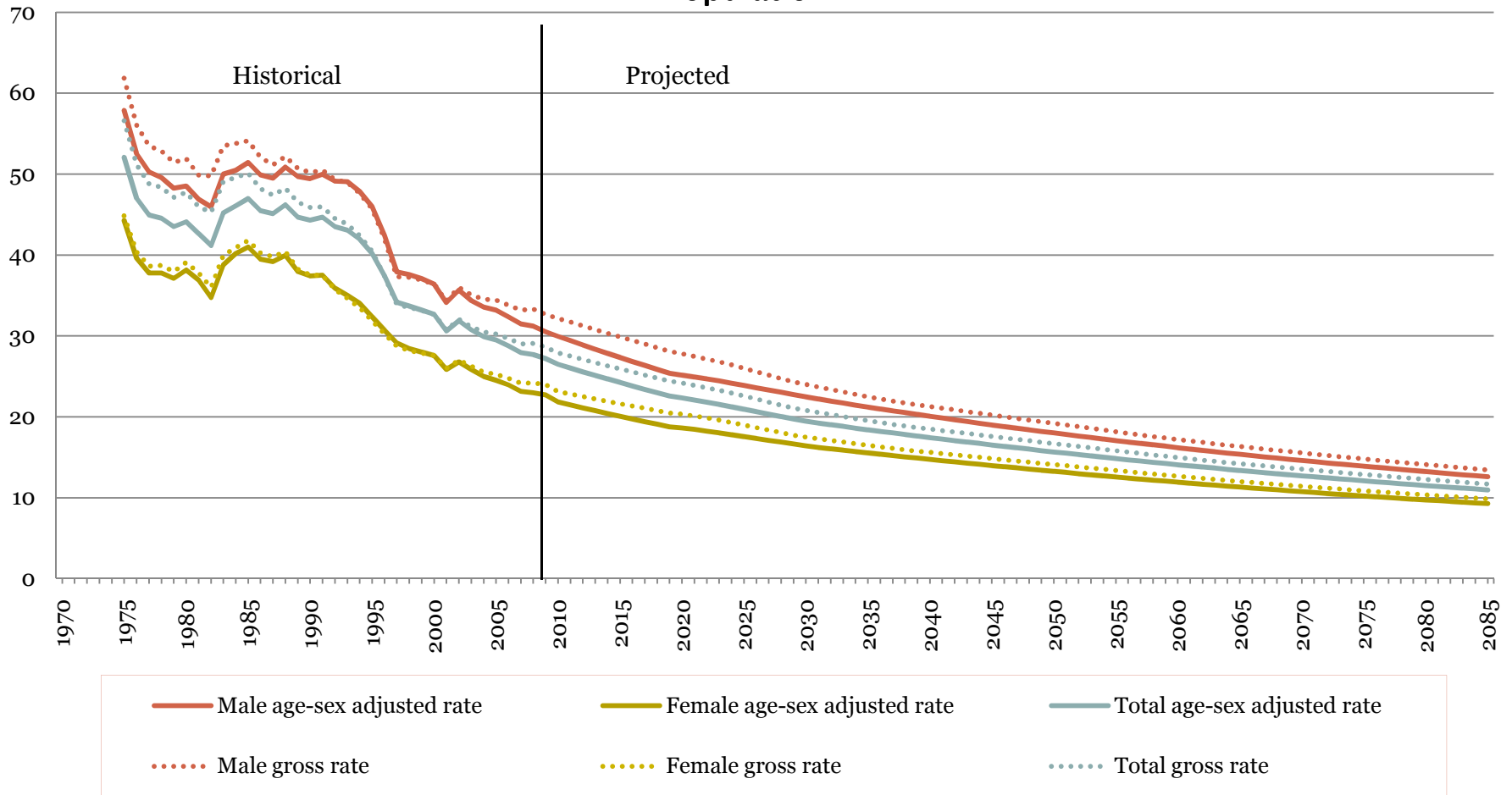
# ...and (2) Shift Toward Younger Incidence Ceases

## Female Disabled Worker Award Incidence Rates: Ratio of Young to Old



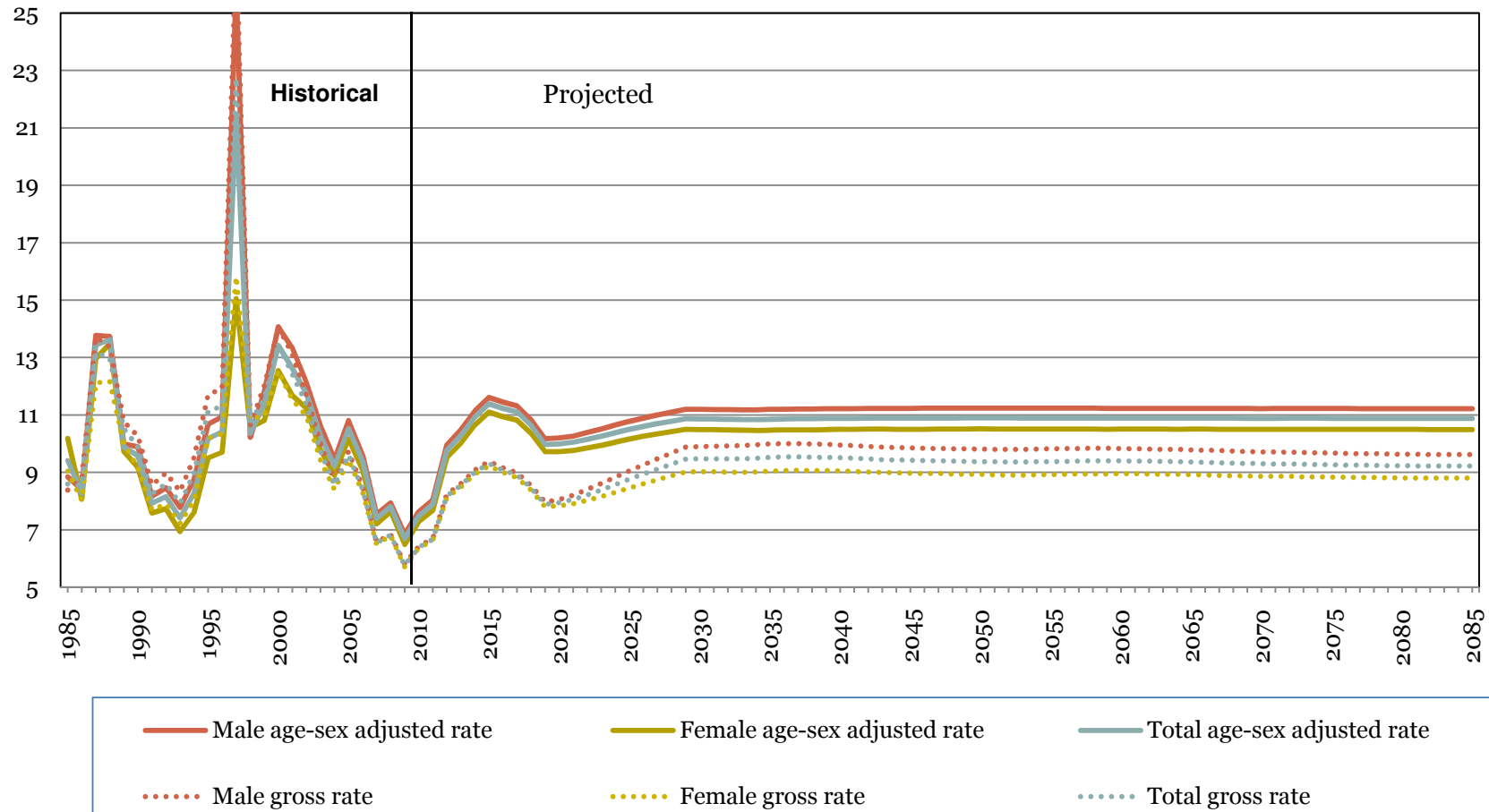
# Death Termination Rates Follow Gen Pop Trends

**DI Disabled Worker Death Rates (per 1,000 Beneficiaries)**  
**Comparison of Gross and Age-Sex-Adjusted to the Year 2000 Disabled Worker**  
**Population**



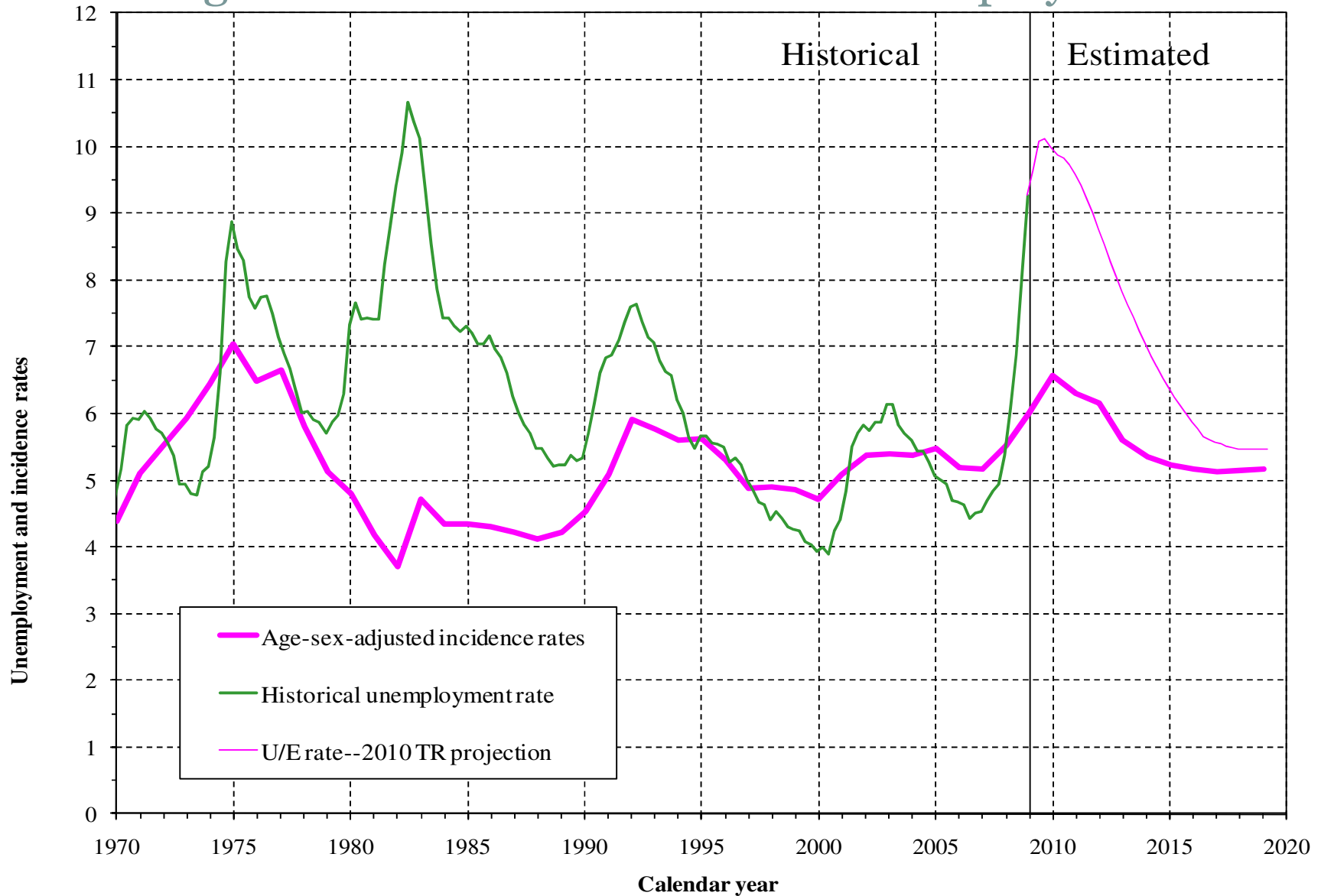
# Recovery Rates Remain Low

DI Disabled Worker Recovery Rates (per 1,000 Beneficiaries)  
Comparison of Gross and Age-Sex-Adjusted to the Year 2000  
Disabled Worker Population



# Projection Methods and Assumptions for Incidence Rates

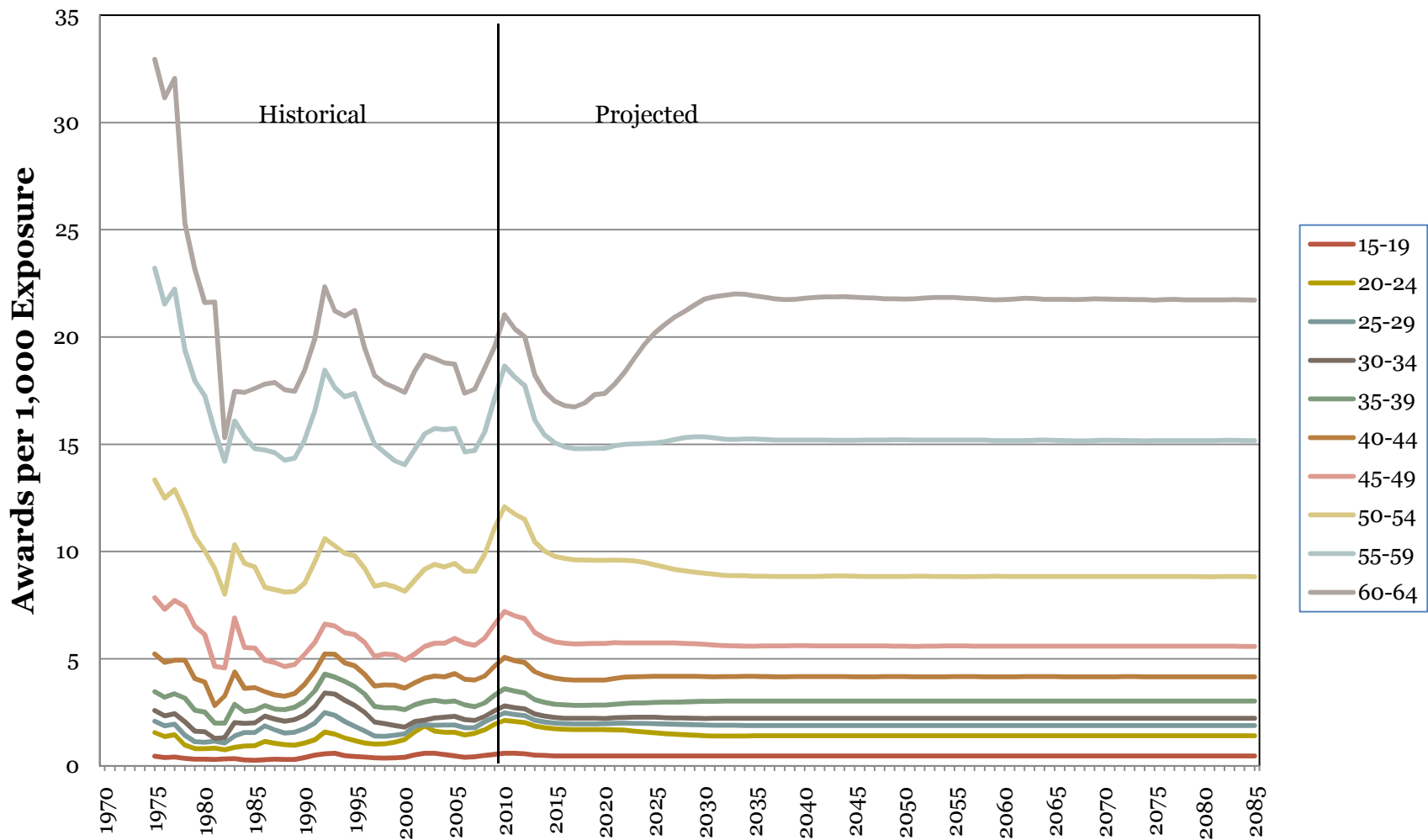
# Short Range Model Reflects Patterns of Unemployment Rates





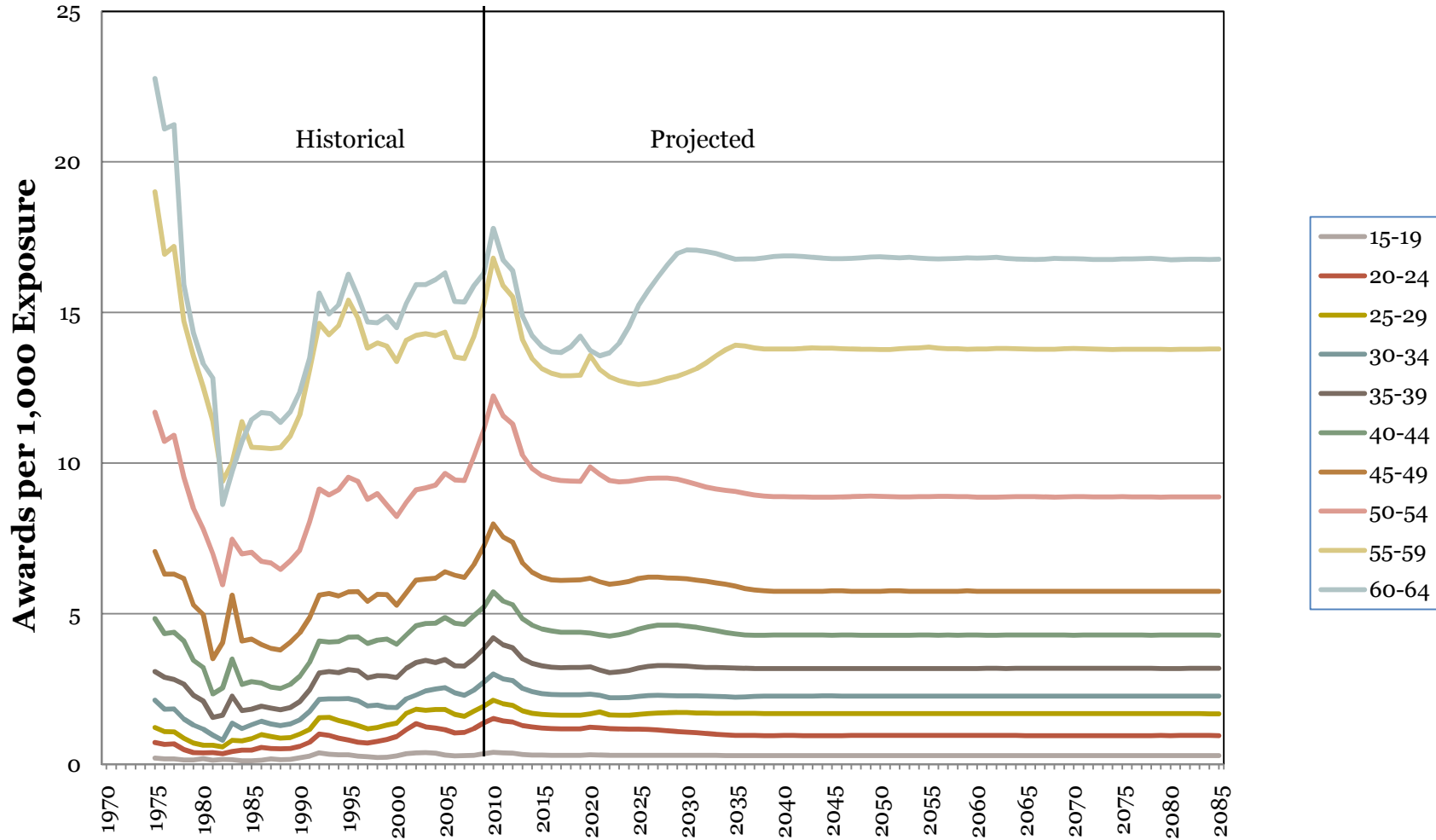
# Long Range Model Tracks Retirement Age and Ultimate Rate Assumptions

## Male DI Disabled Worker Award Incidence Rate



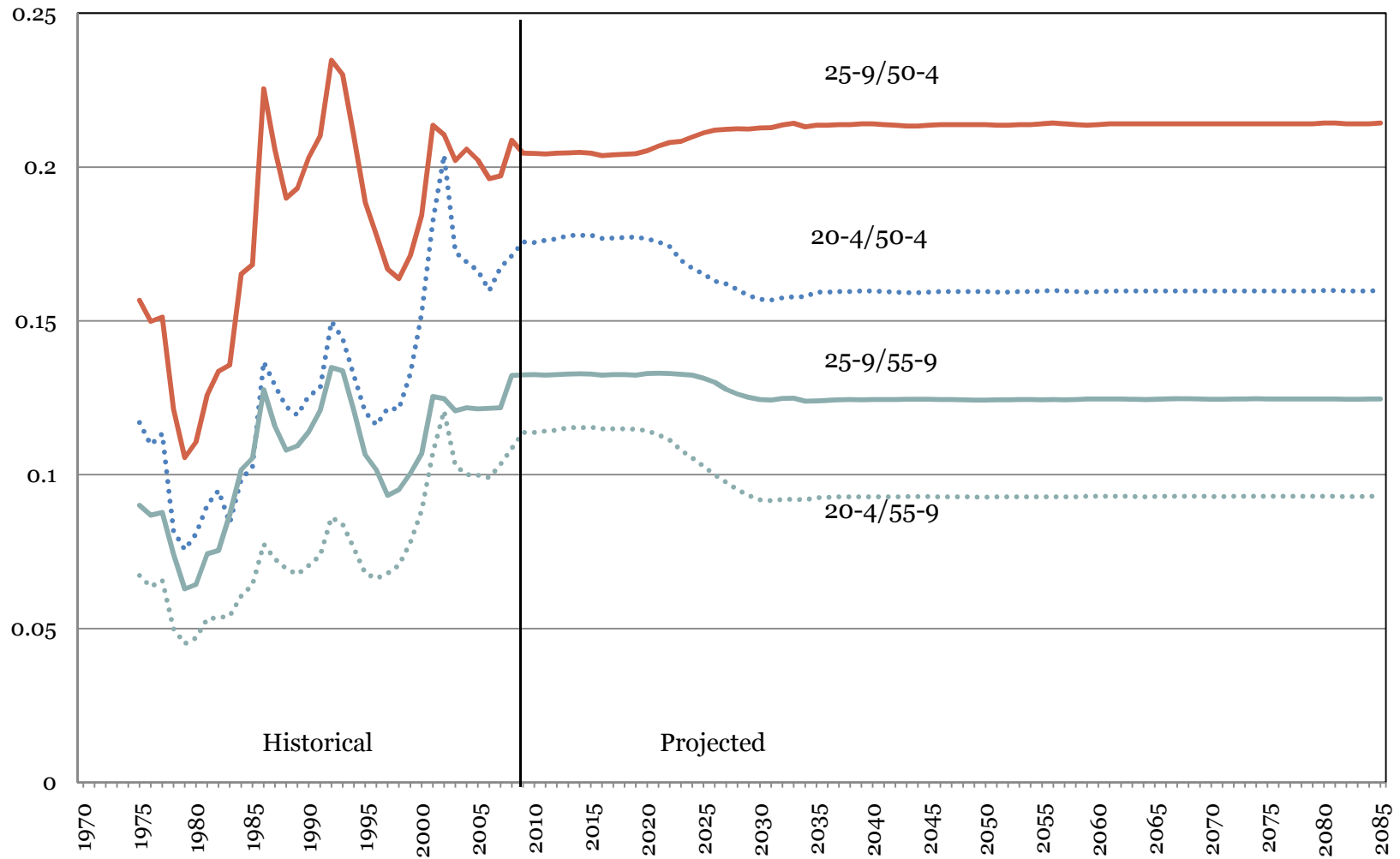
# Long Range Ultimate Incidence Rates Assumed to Stabilize

## Female DI Disabled Worker Award Incidence Rate

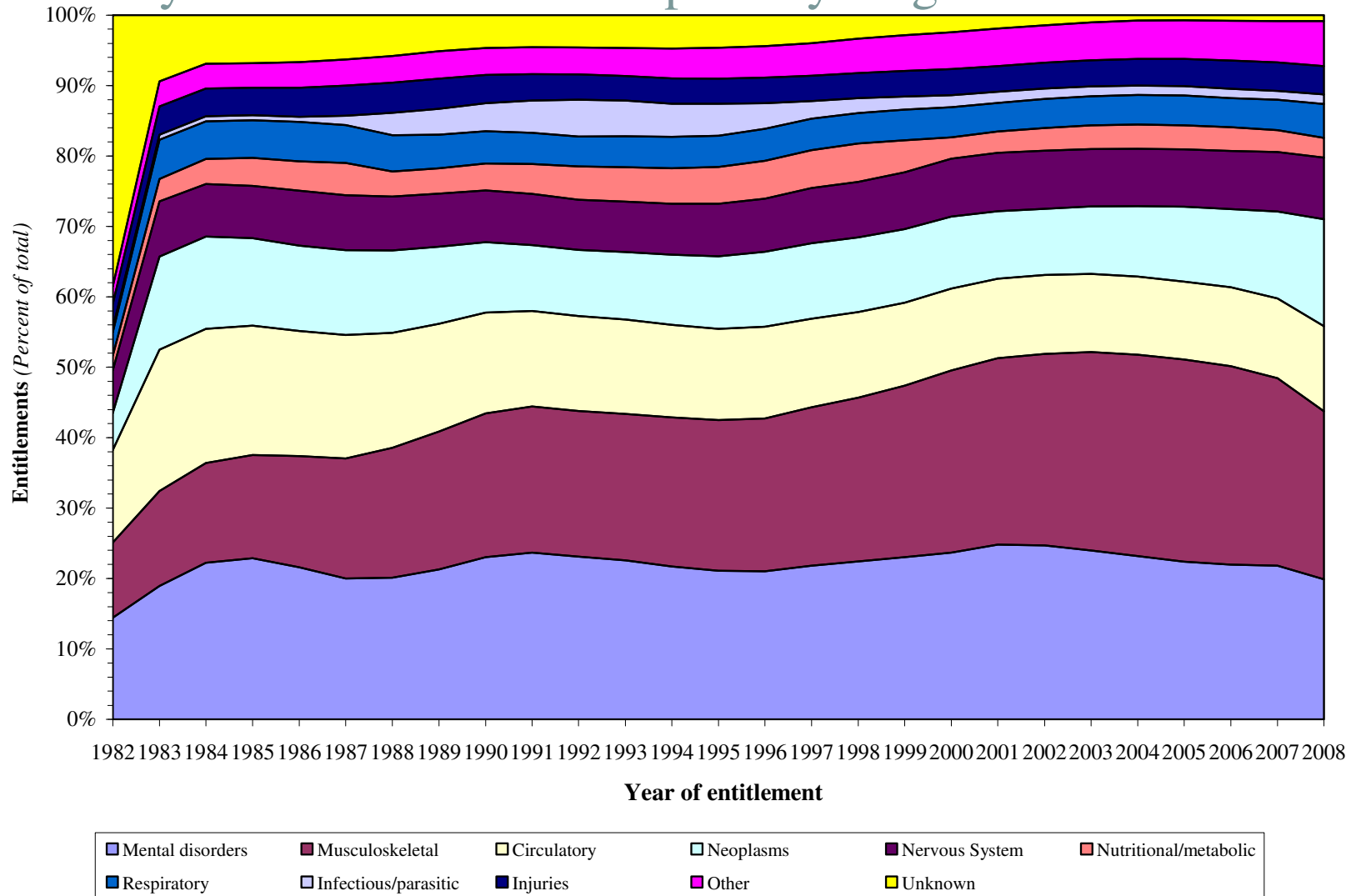


# Additional Information for Future Discussion

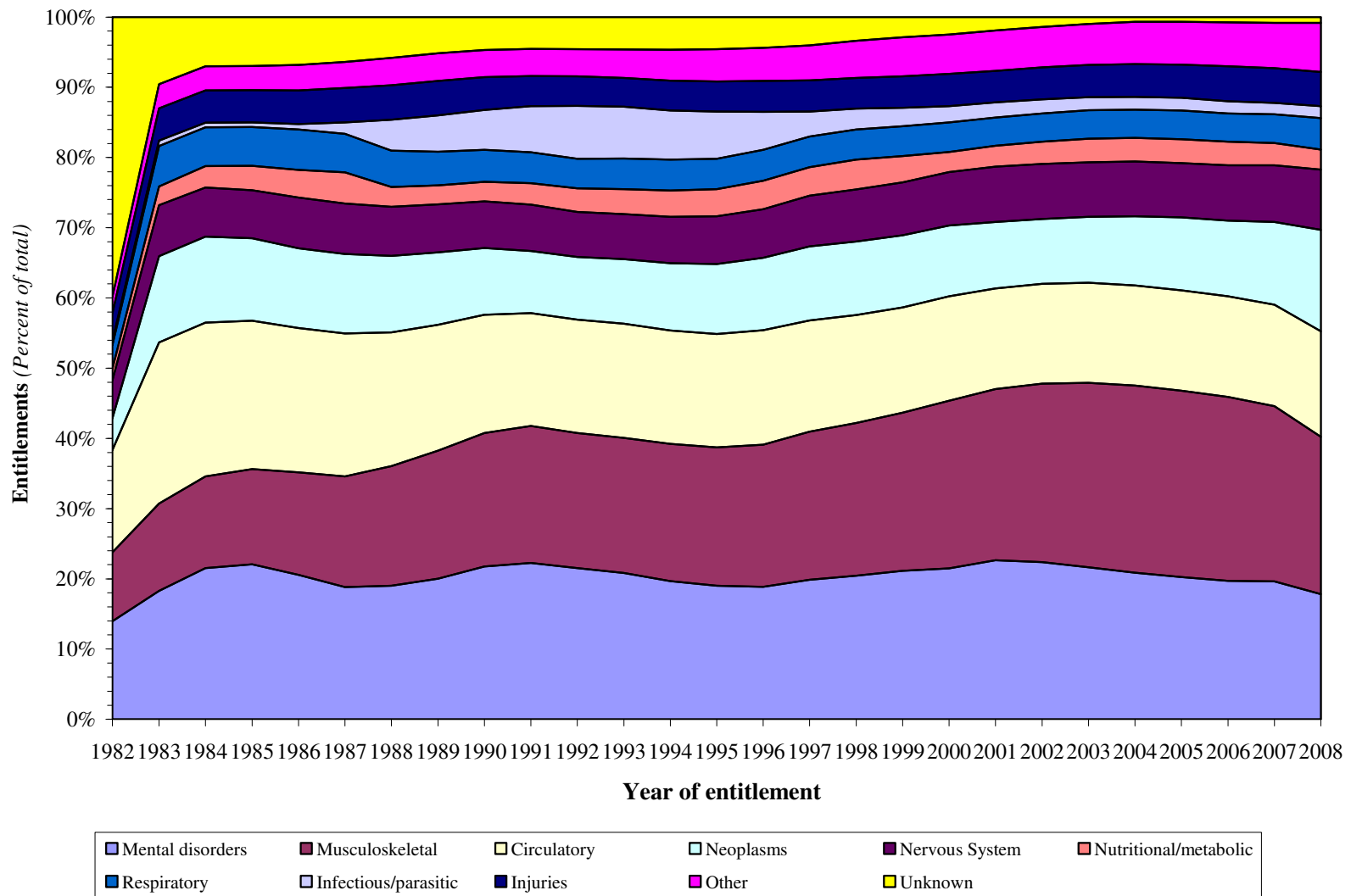
## Male Disabled Worker Award Incidence Rates: Ratio of Young to Old



## DIBs awarded through June 2009 by year of entitlement and primary diagnosis code



# DIBs awarded through June 2009 by year of entitlement and primary diagnosis code, *males all ages*



## DIBs awarded through June 2009 by year of entitlement and primary diagnosis code, *females all ages*

